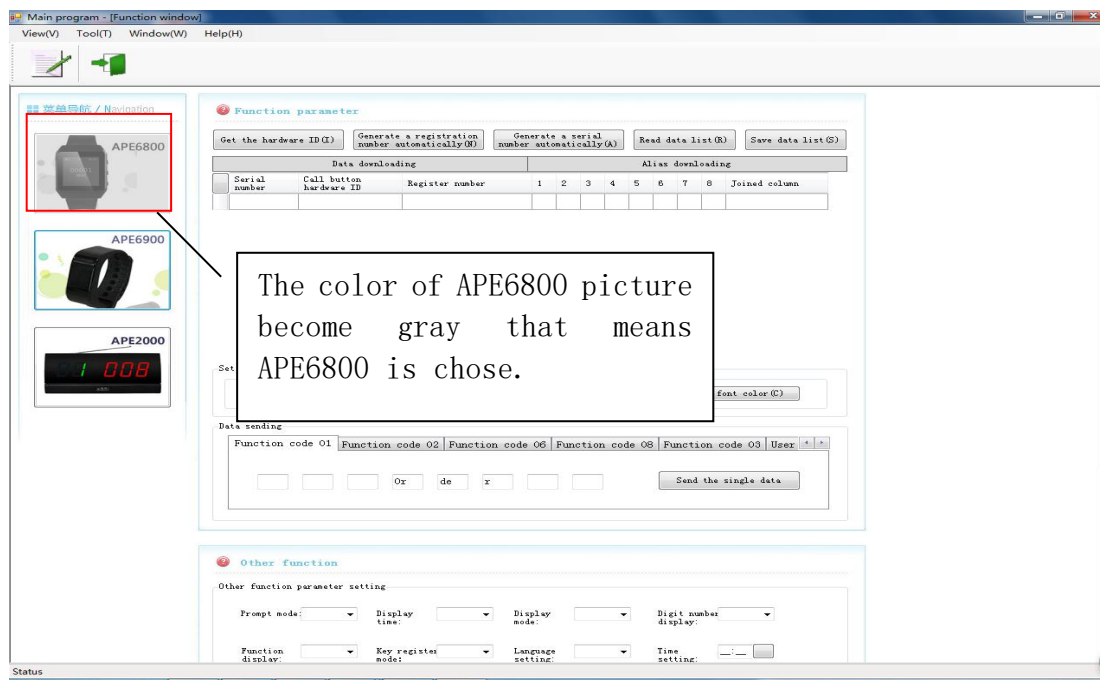


Manual for SINGCALL date download software of APE6800/APE6900/APE2000 series

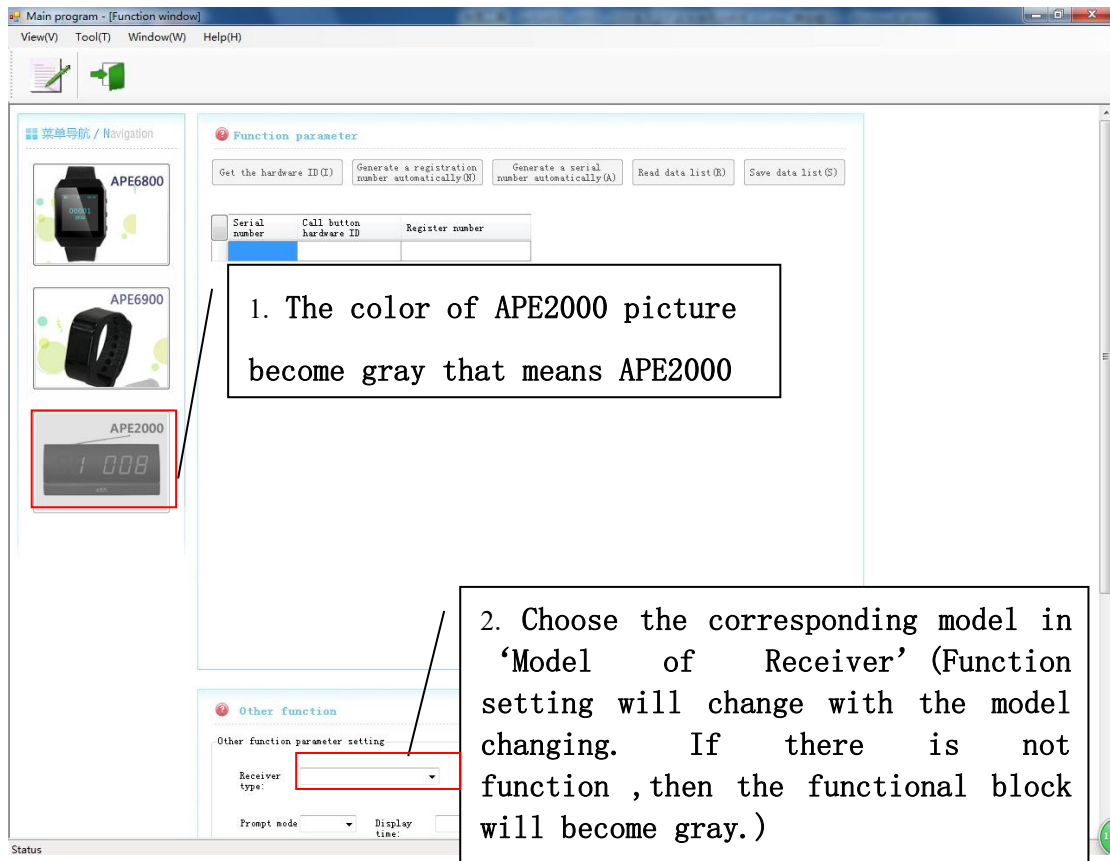
Please choose the corresponding model before using.

Please choose the corresponding model, the color of the model picture will become gray. As following:



APE2000 series receiver: choose the corresponding model in 'Model of Receiver' (Function setting will change with the model changing. If there is not function, then the functional block will become gray.)

As following:



1. Catalogue

i. Port Setting

ii. Register, read, change, copy, delete and initialize the buttons' numbers (APE6800 needs to be set in "download" mode)

iii. User-defined, read, change, copy, delete and initialize the alias of the buttons (APE6800 needs to be set in "Alias Downloading" mode)

iv. Custom the function name of button and LOGO (APE6800 needs to be set in "download" mode)

v. Basic data function setting (APE6800 needs to be set in "download" mode)

vi. The screen font color setting (APE6800 needs to be set in "download" mode)

1. APE6800 (Please read all IDs of the buttons under the "download" mode. Then you can read all aliases of the buttons. Because two download mode are different. If two functions are handled by mistake, please exit then try the correct operation again.)

A. Download: APE6800: please set APE6800 into “Download” mode, and keep pressing FUN key until “ok” appears on the screen.

B. Alias download: APE6800: please set APE6800 into “Alias Downloading” mode, and keep pressing FUN key until “ok” appears on the screen.

C. Then connect APE6800 to the computer with a serial port line. After installing the data download software, plug the dongle. Then the software will work.



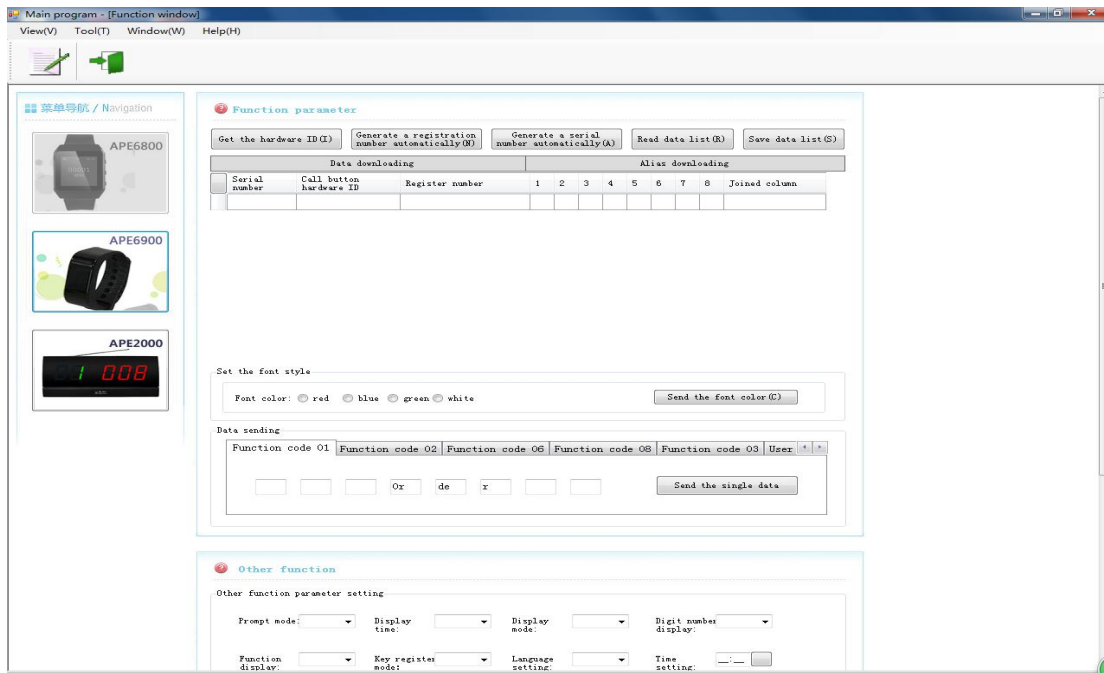
2. APE6900: please set APE6900 to F11, and keep pressing key until “ok” appears on the screen. Then connect APE6900 to the computer with a serial port line. After installing the data download software, plug the dongle. Then the software will work.

3. APE2000 series receiver: in standby mode, then connect the receiver to the computer with a serial port line. After installing the data download software, plug the dongle. Then the software will work.

3. The specific steps are as follow (take APE6800 as example):

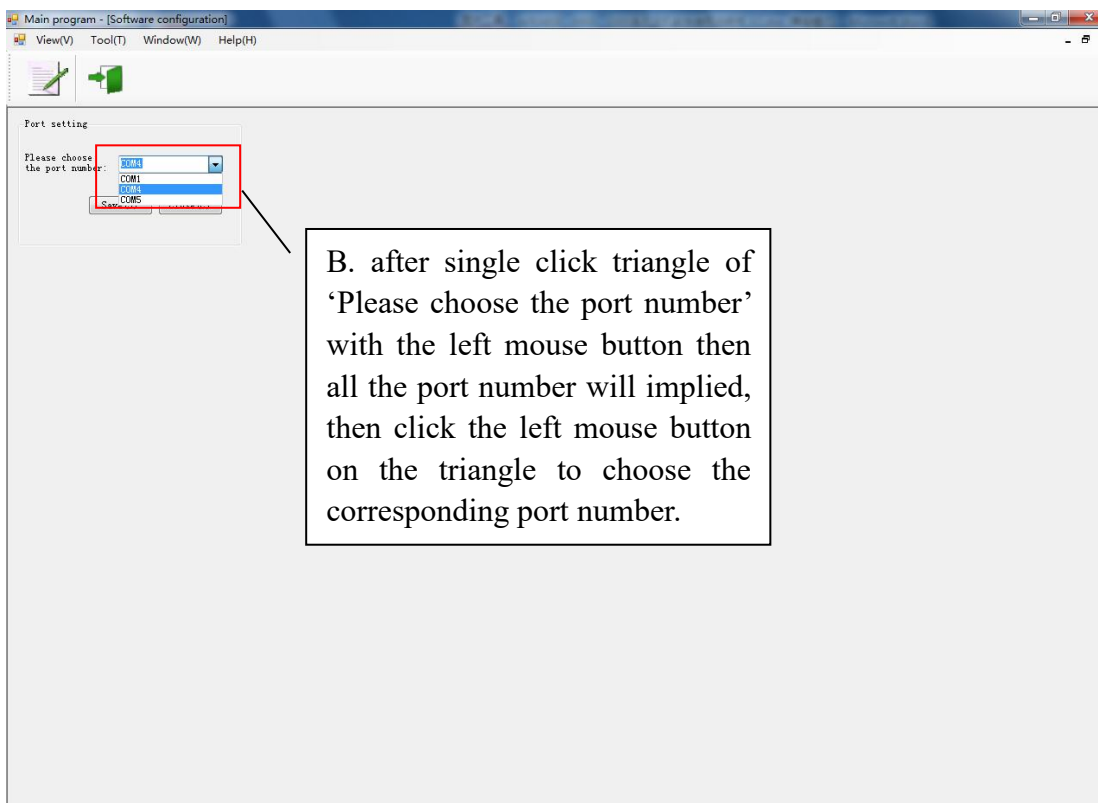
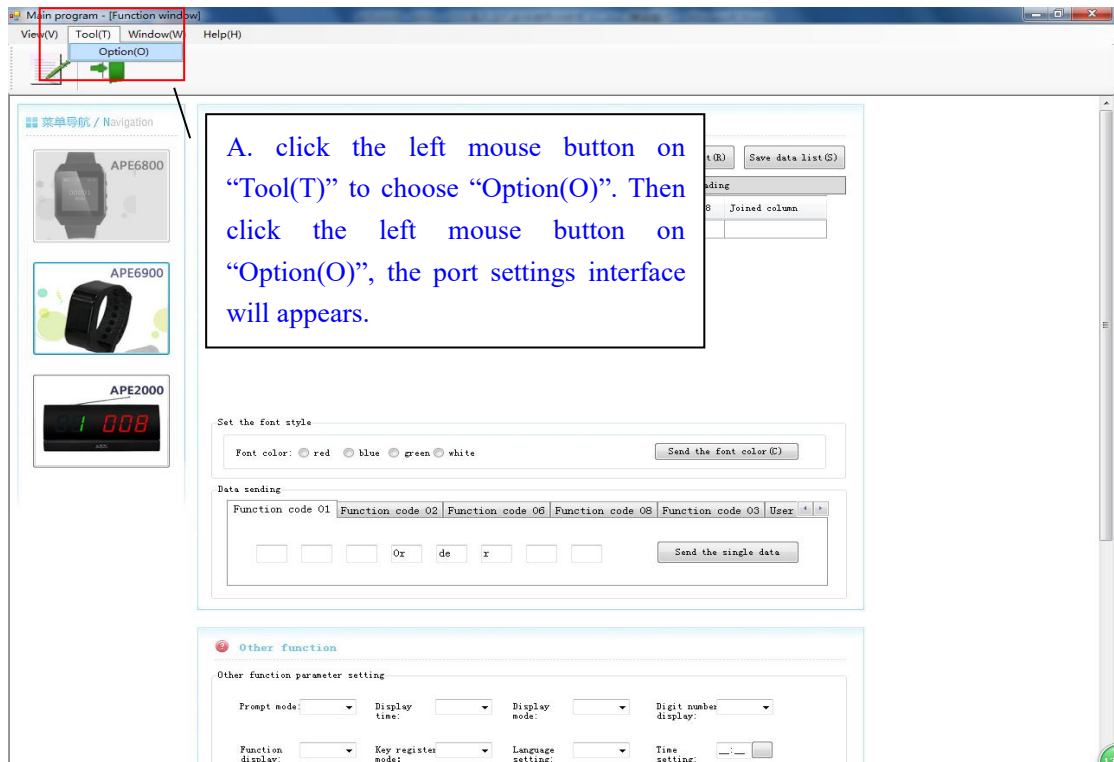
i. Port setting

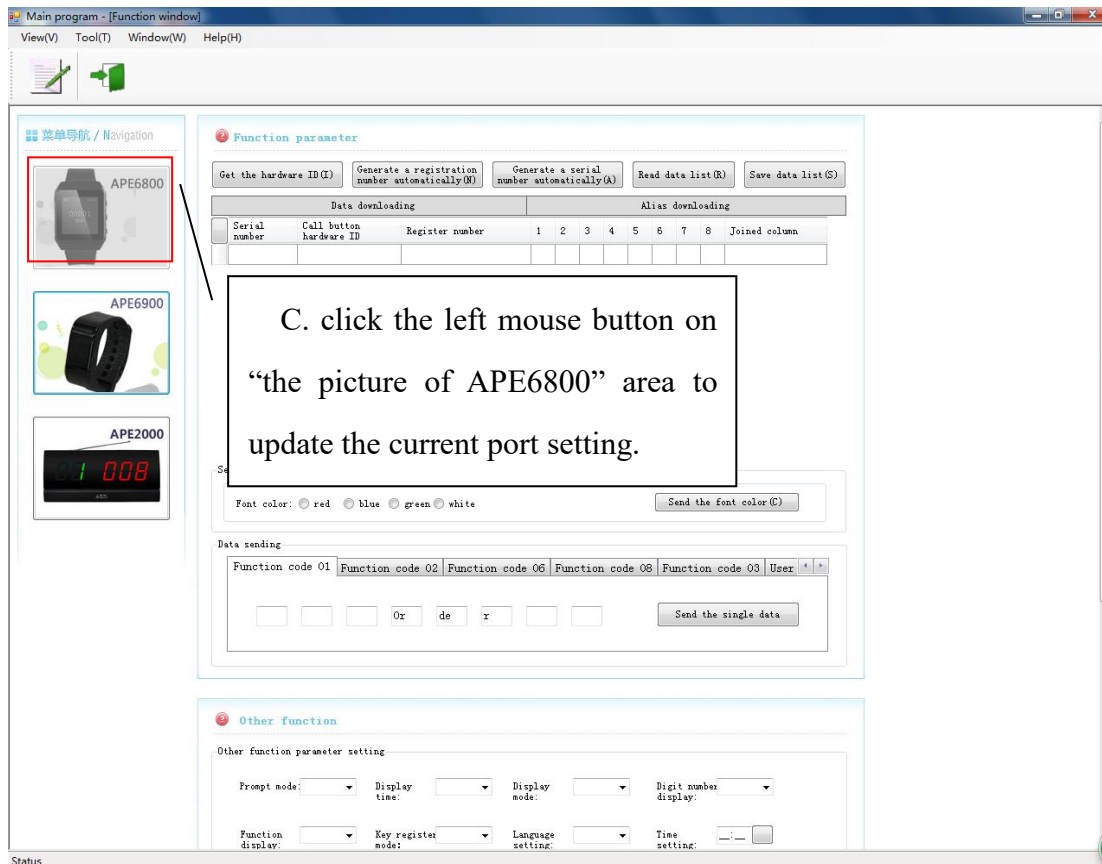
1) After installing the software, please click to open the main interface:



2) Port setting

Enter into port setting: 'Tool' — 'Option' — 'Save' — 'Close' — 'Data update'(click on the picture of APE6800 area)





ii. Register, read, change, copy, delete and initialize the buttons' numbers (APE6800 needs to be set in "download" mode)

According to the manual, after get the ID of button' s hardware, input the registration number. Click the right mouse button to send the single data or whole data to the watch. This is the way to register one or more

buttons.

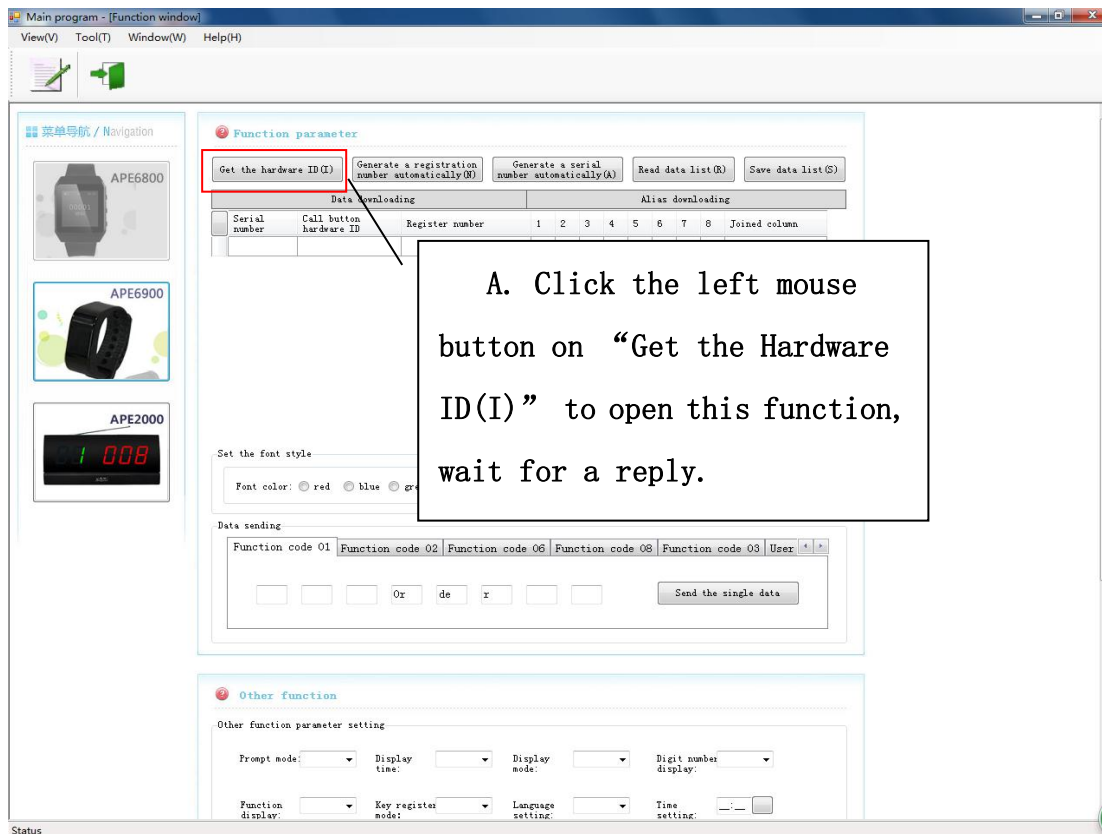
Attention: If the registered buttons need to be changed the number, please follow steps III to delete the registered number at first. Then these buttons can be registered again.

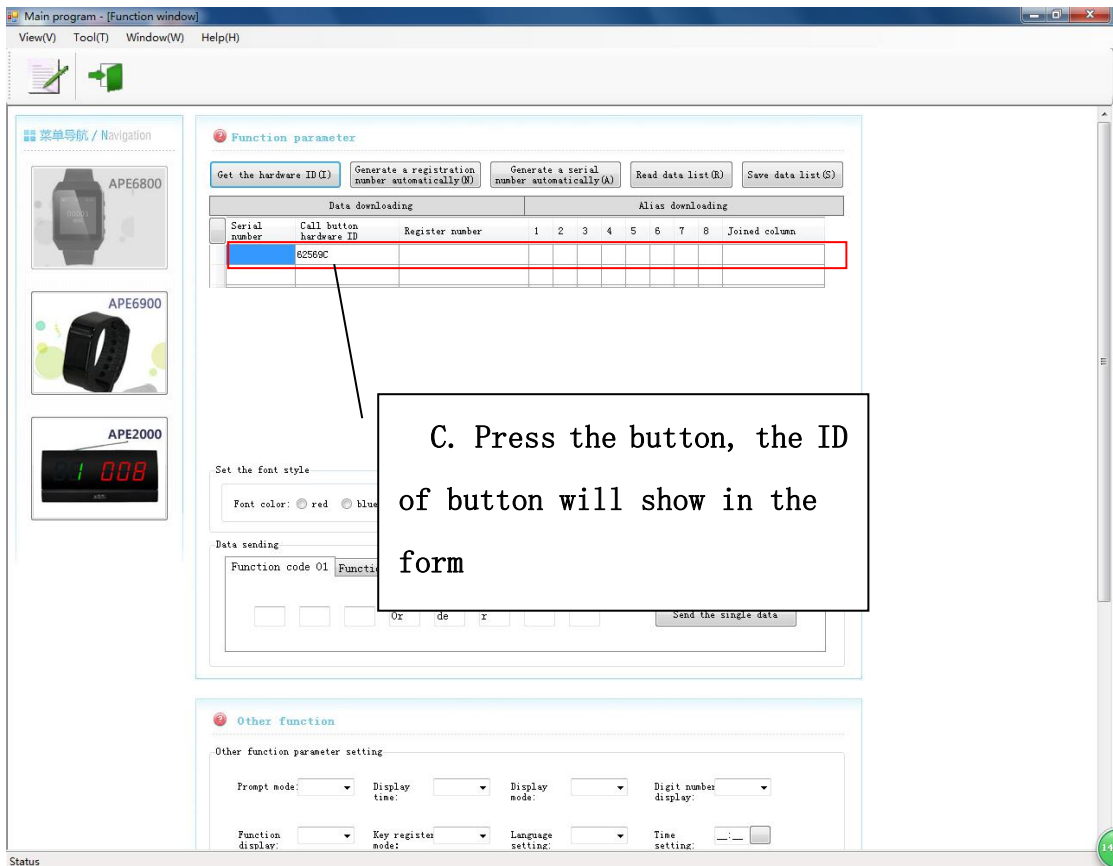
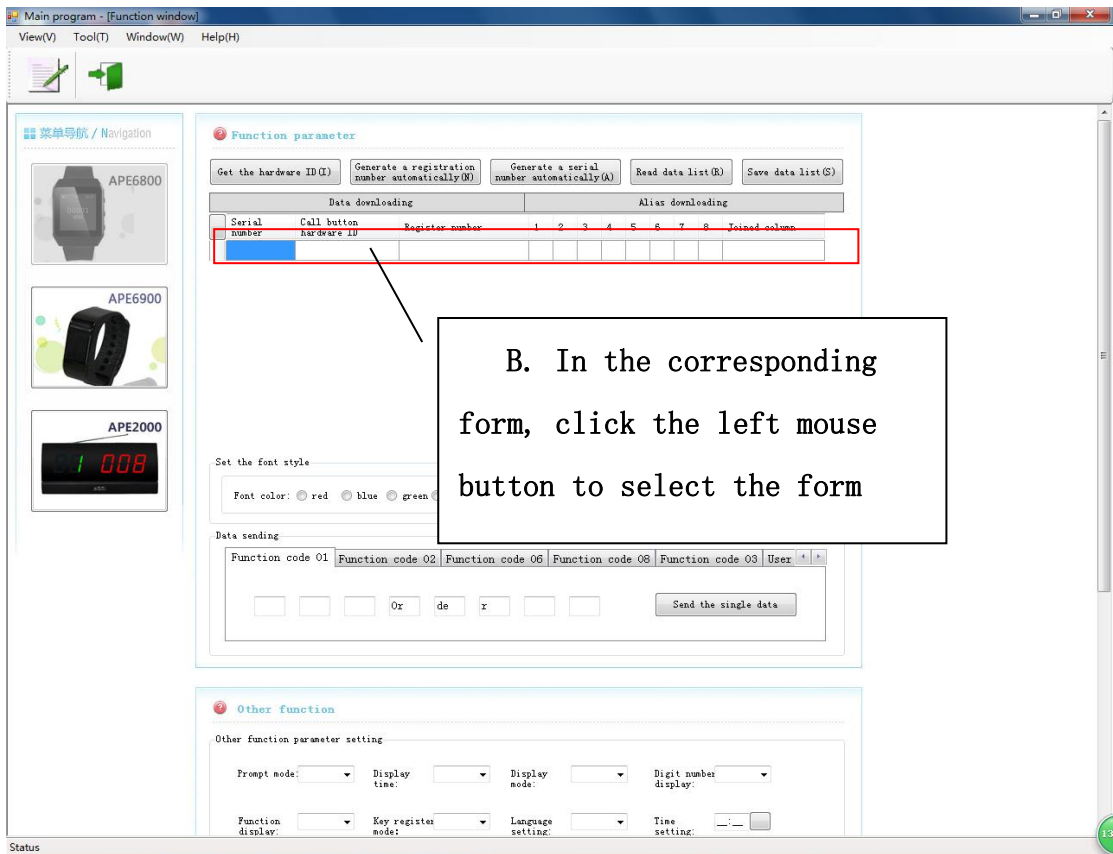
When you register the numbers to APE2000/2300/2500/2600 receiver, the sequence number must be same with the registration number.

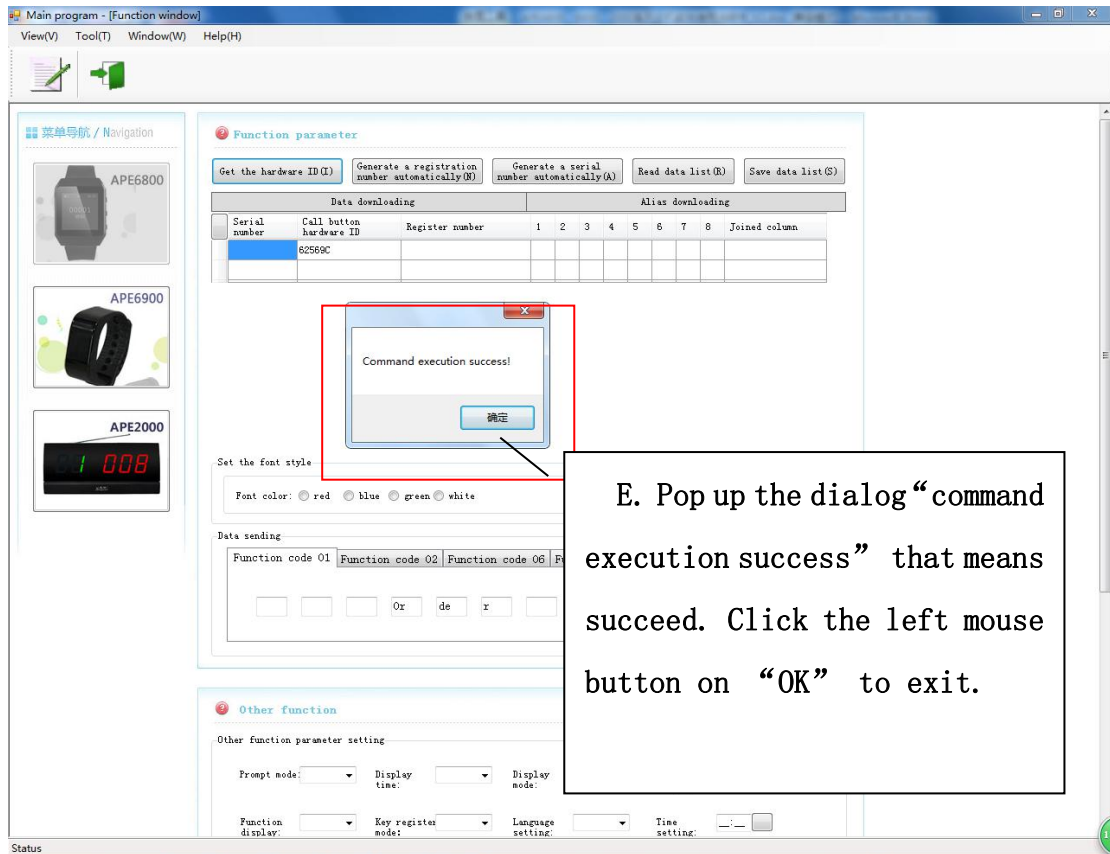
Specific operation as following,

1) Get the hardware ID

Get the Hardware ID—select the list—upload the ID of button—pop out the dialog “command execution success” —click “OK”—“ Stop the Hardware ID”—exit this mode

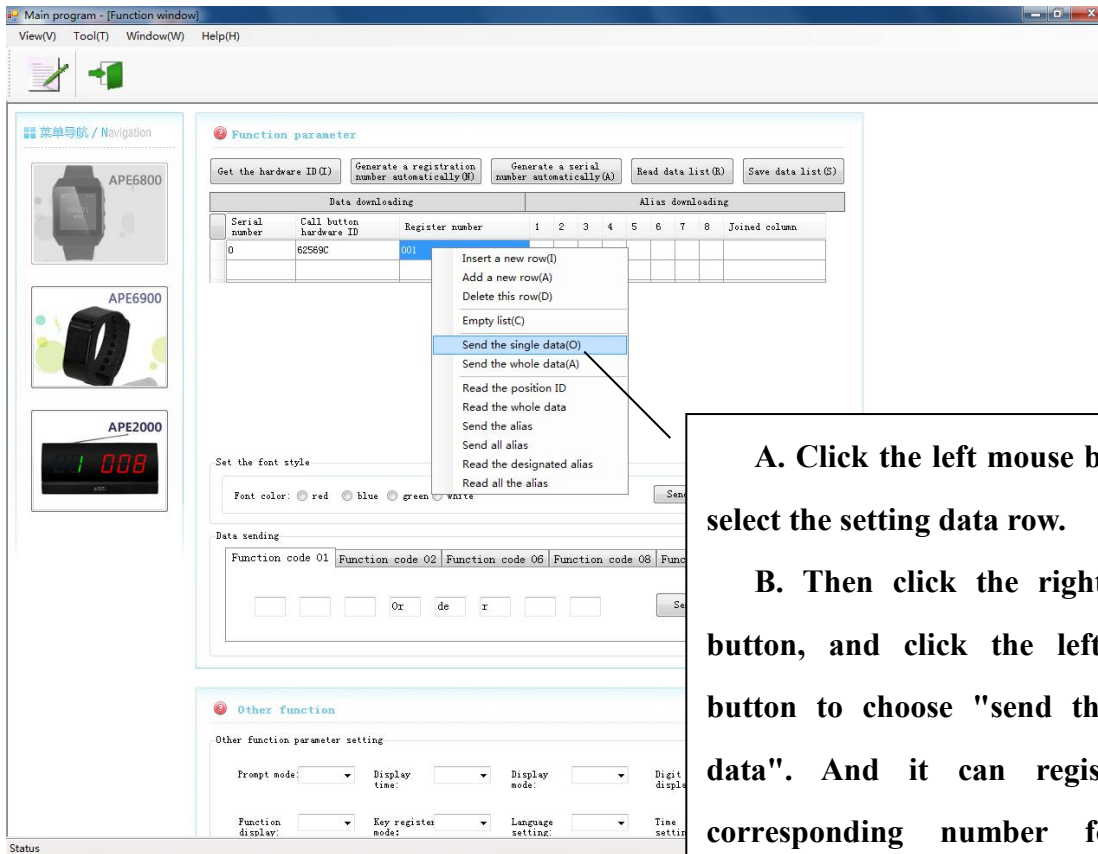






2) Send the single data:

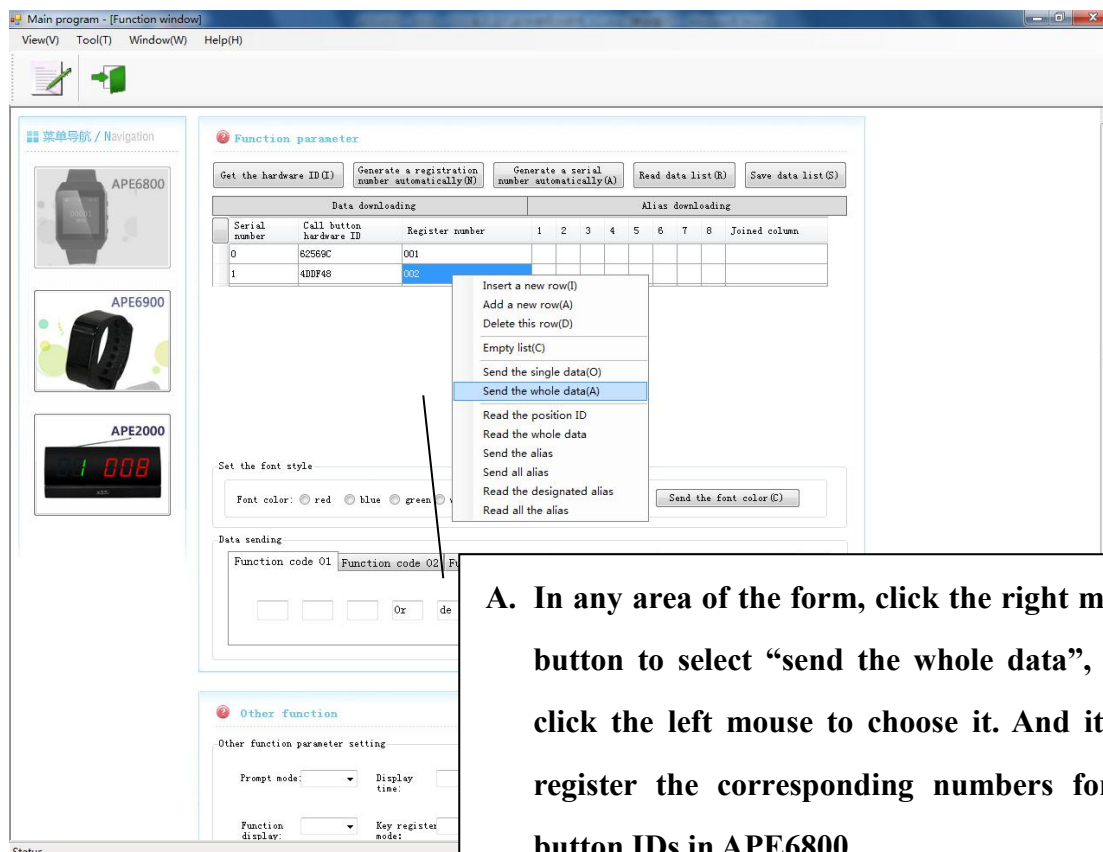
Click the left mouse button on "send the single data" —click the right mouse button to select "send the single data" —pop up the dialog "command execution success" —click "OK", meaning the button is registered successfully.



A. Click the left mouse button to select the setting data row.

B. Then click the right mouse button, and click the left mouse button to choose "send the single data". And it can register the corresponding number for this button ID in APE6800.

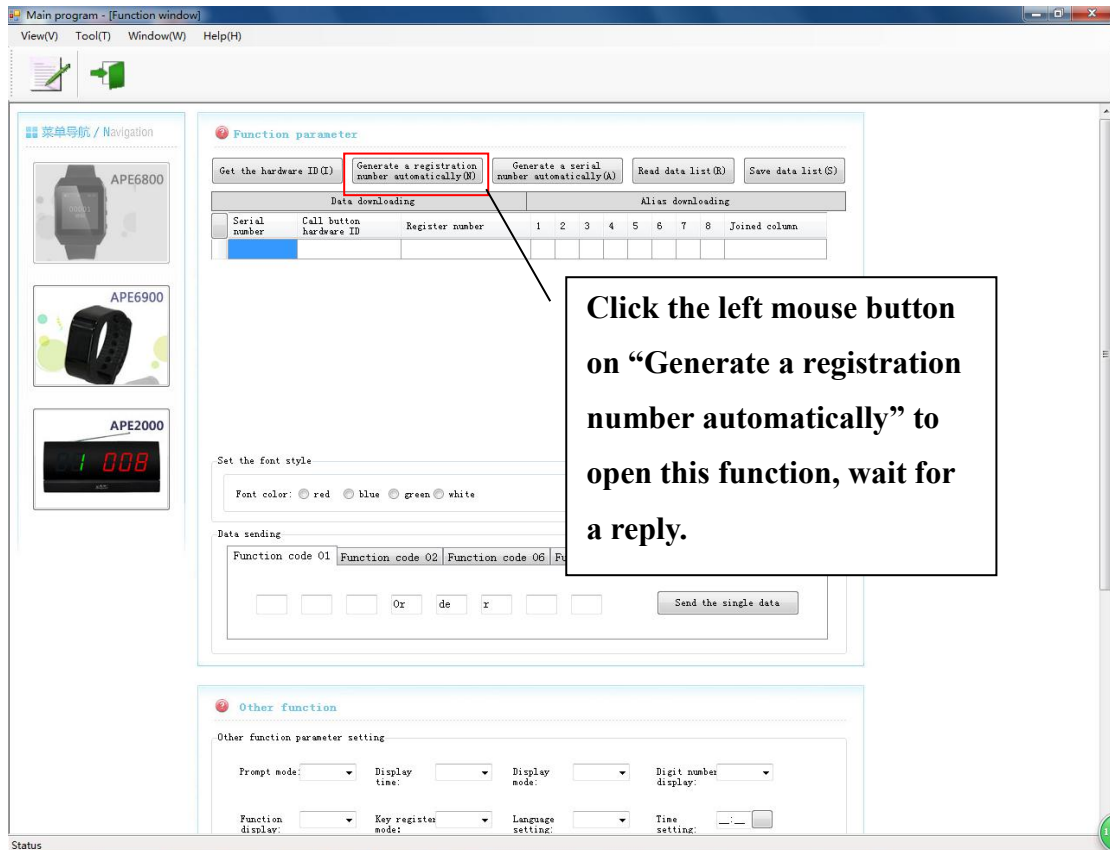
3) Send the whole data (APE6800 needs to be set in “download” mode)
 In any area of the form, click the right mouse button to select “send the whole data” —pop up the dialog “command execution success” —click “OK” to exit. The all information of the buttons uploaded is registered successfully in the watch.



A. In any area of the form, click the right mouse button to select “send the whole data”, then click the left mouse to choose it. And it can register the corresponding numbers for all button IDs in APE6800.

4) Generate a registration number automatically (APE6800 needs to be set in “download” mode):

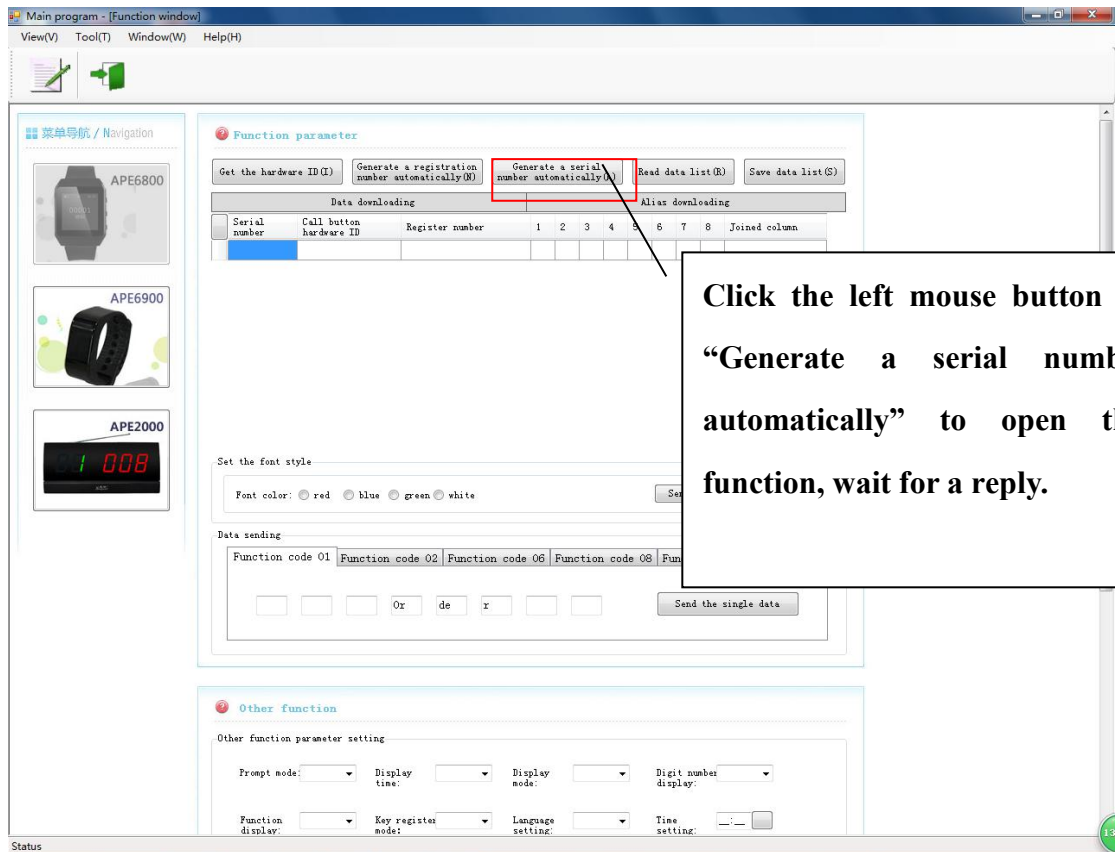
Under open the function “Get the Hardware ID”, open the function “Generate a registration number automatically”. Then the registering number will add one number up automatically. After uploading the button ID, click “Stop generate a registration number automatically” to stop this function.



5) Generate a serial number automatically (APE6800 needs to be set in “download” mode):

Under open the function “Get the Hardware ID”, open the function “Generate a serial number automatically”. Then the registering number will add one number up automatically. After uploading the button ID, click “Stop generate a serial number automatically” to stop this function.

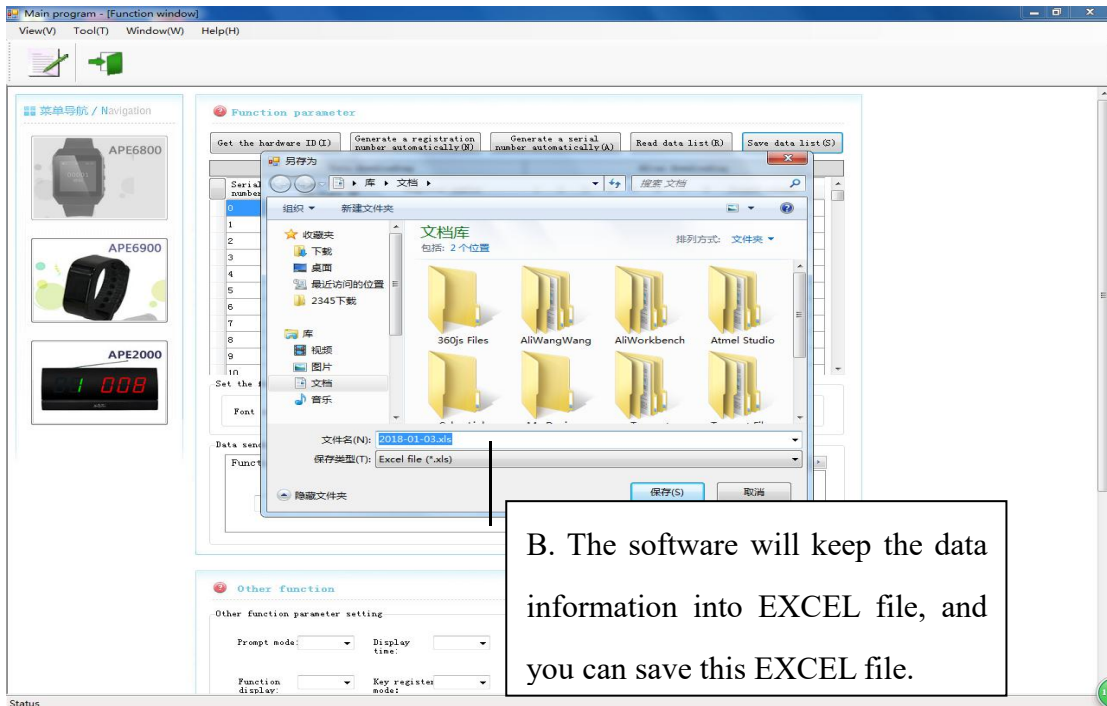
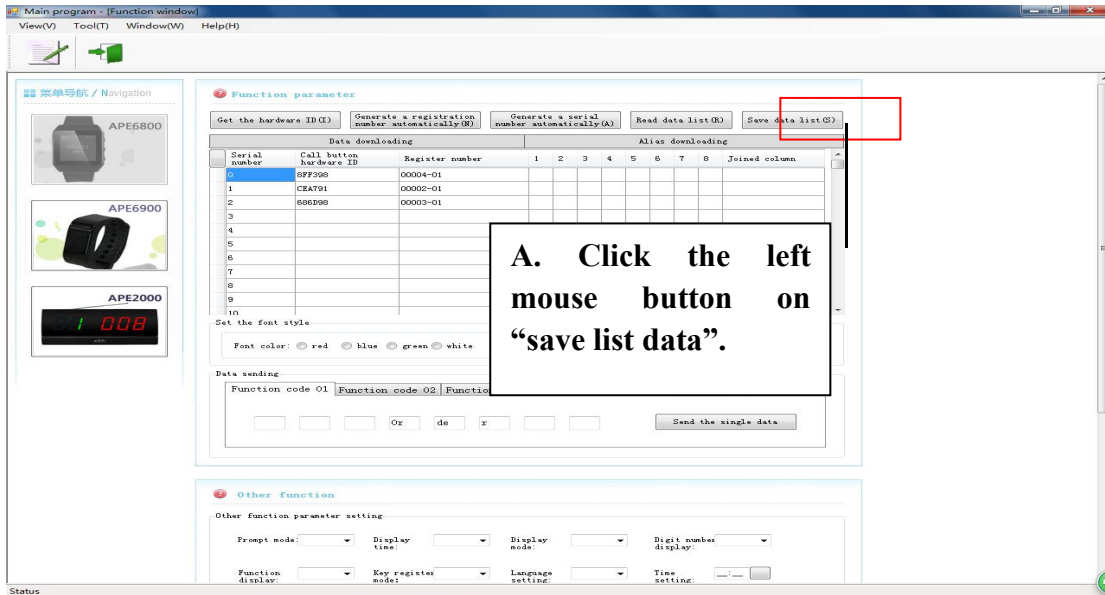
Attention: serial number is stand for the location of the registered number in APE6800. APE6800 can be registered 399 buttons at most. So serial number can not be over 399. If the number is over 399, the software will also default set 399.



6) Save and read the data in the form

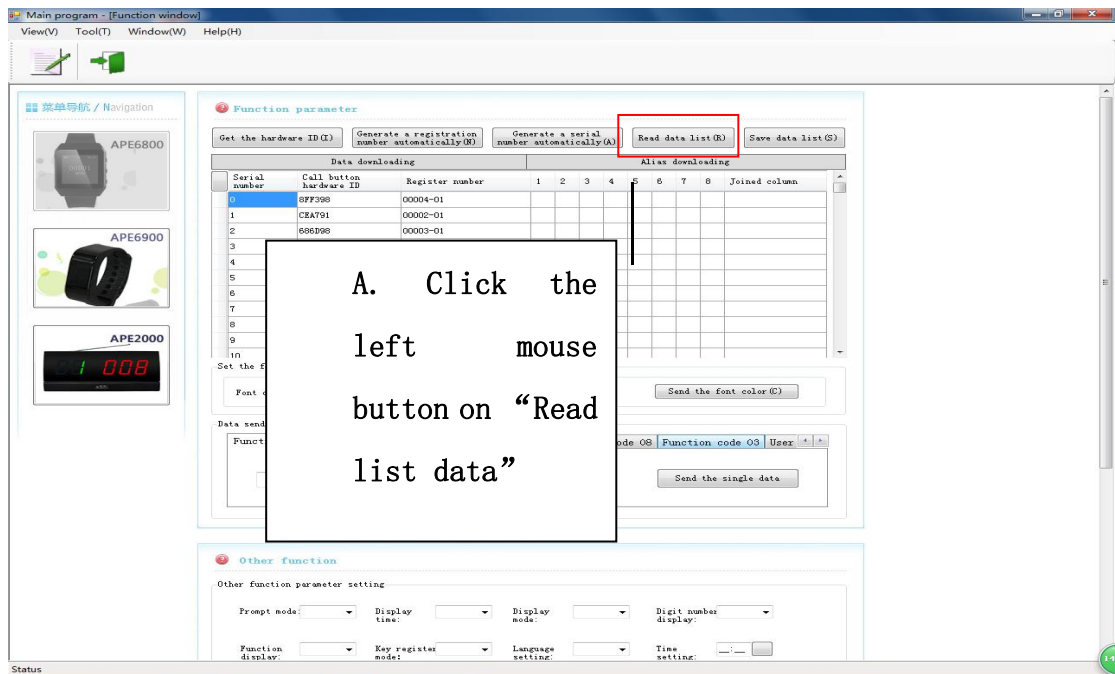
Registered the same calling information in many watches, you can keep saving the registered information of single watch and then copy it to others. If you save the uploading buttons' ID information, it will be convenient to adjust and change the information in the future.

a) save list data

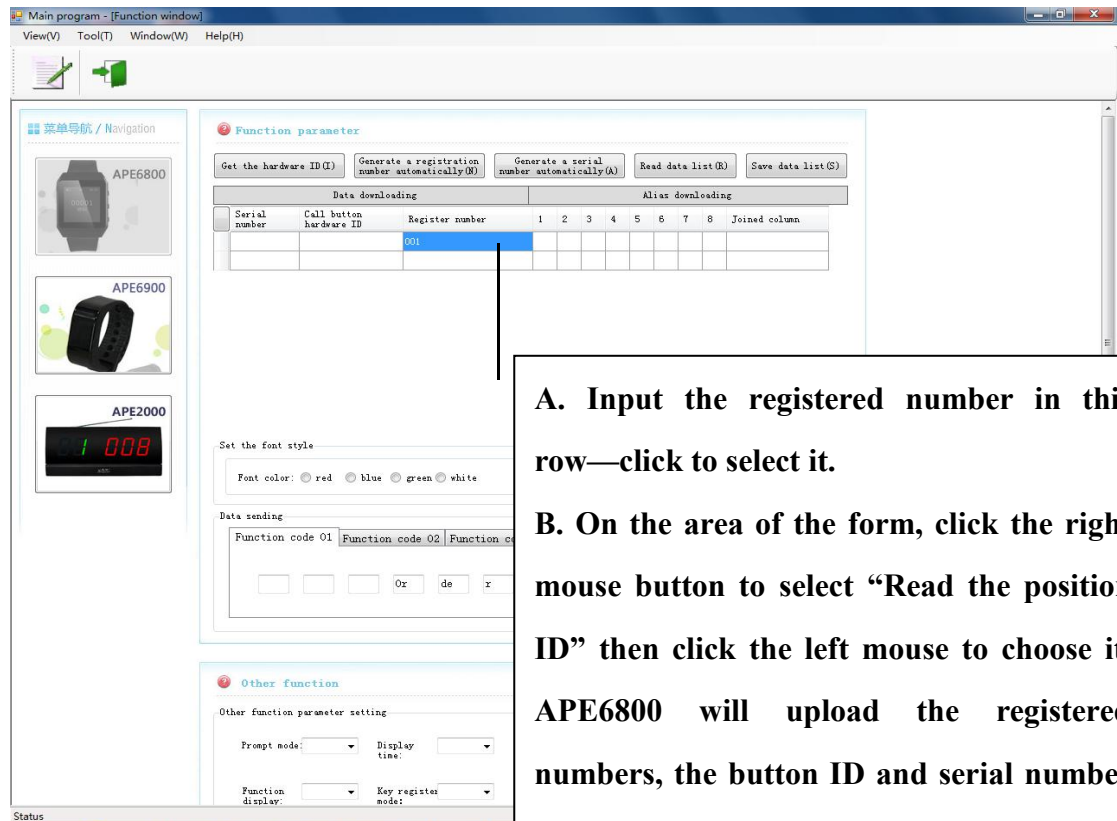


Notes: The form of this EXCEL file is just suit to the 2003 version. The other version needs to turn to 2003 version or keep the name of file change to “xls” form.

b) read list data

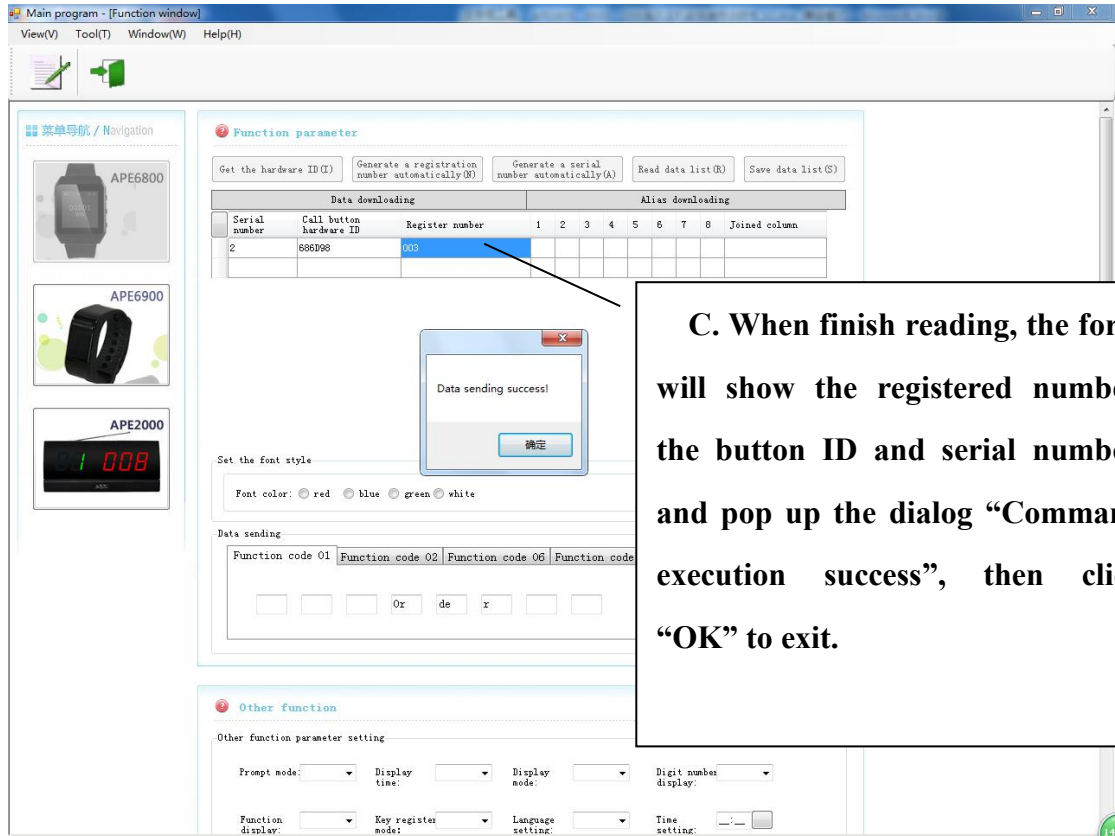


7) Read the position ID (APE6800 needs to be in “download” mode):
After reading the position ID, it can apply to change the button ID or registered numbers

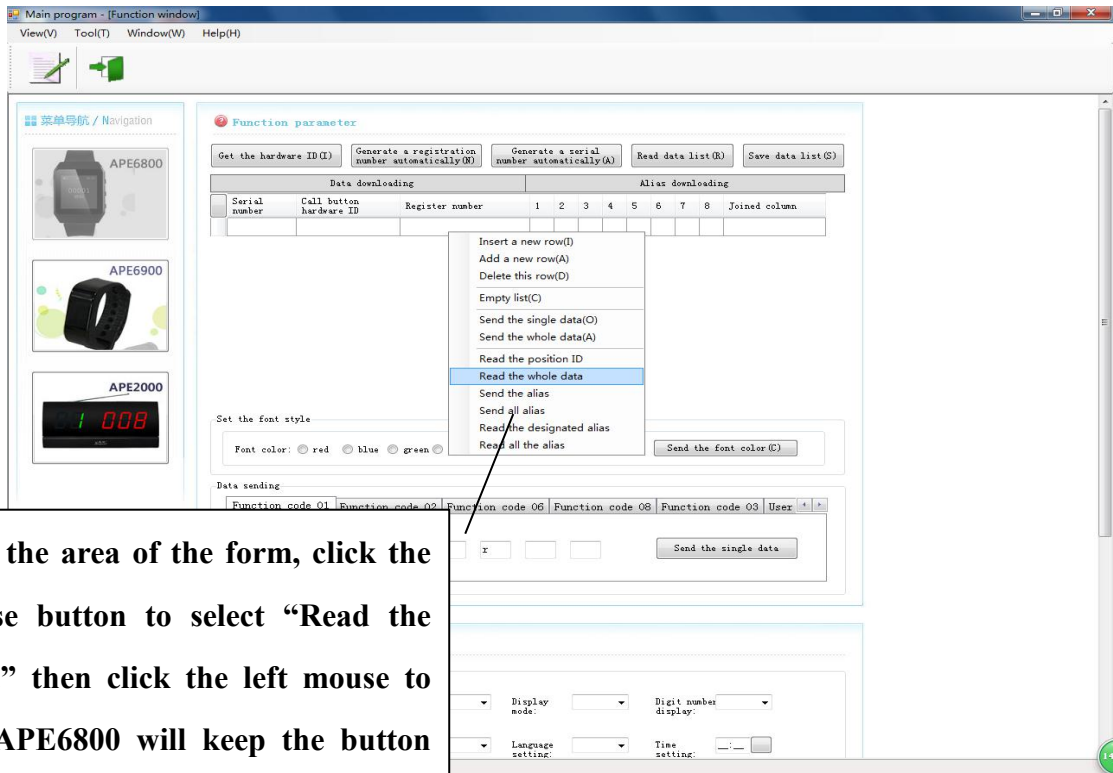


A. Input the registered number in this row—click to select it.

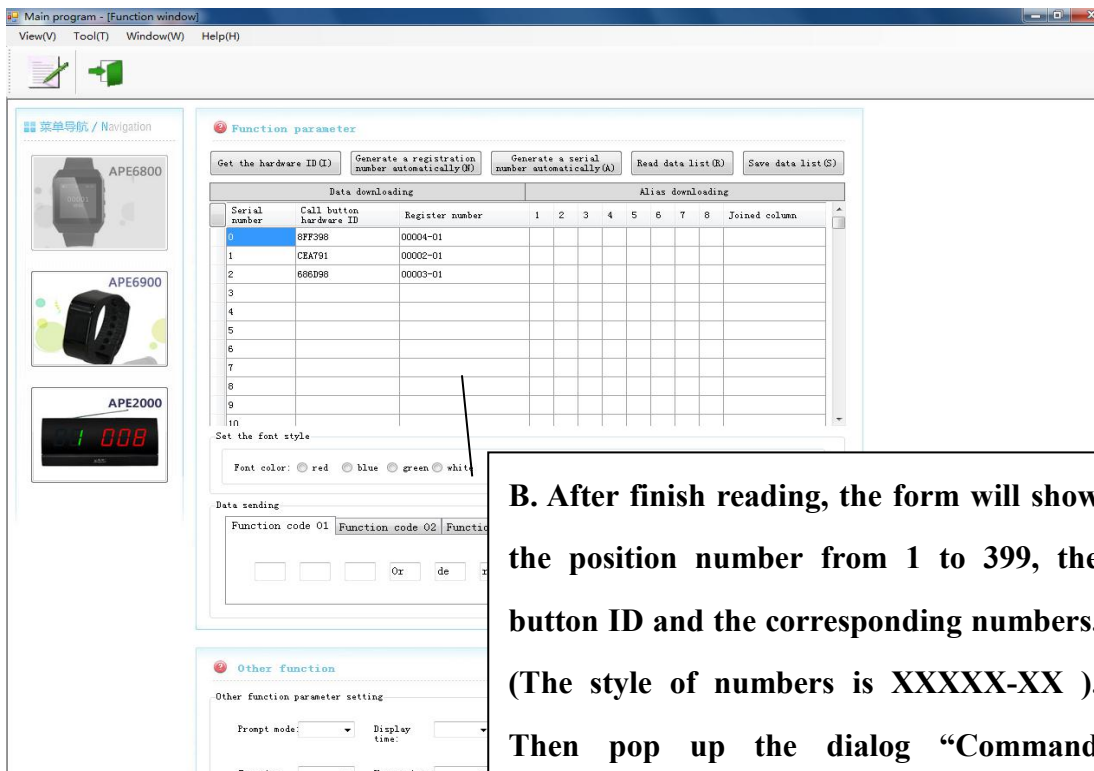
B. On the area of the form, click the right mouse button to select “Read the position ID” then click the left mouse to choose it. APE6800 will upload the registered numbers, the button ID and serial number to the corresponding form as follow.



8) Read the whole data (APE6800 needs to be set in “download” mode):
 After reading the whole ID, it can apply to change all button IDs or registered numbers.



A. On the area of the form, click the right mouse button to select “Read the whole data” then click the left mouse to choose it. APE6800 will keep the button registering information to the corresponding form as follow.



B. After finish reading, the form will show the position number from 1 to 399, the button ID and the corresponding numbers. (The style of numbers is XXXXX-XX). Then pop up the dialog “Command execution success“, then click “OK”.

9) Add multi-row form

In the blank area of Serial number, click the left mouse button—input the number you want to add—click “OK”

10) Insert new row

In front of the selecting row, add a new row.

11) Add new row

Behind the selecting row, add a new row.

12) Delete the row

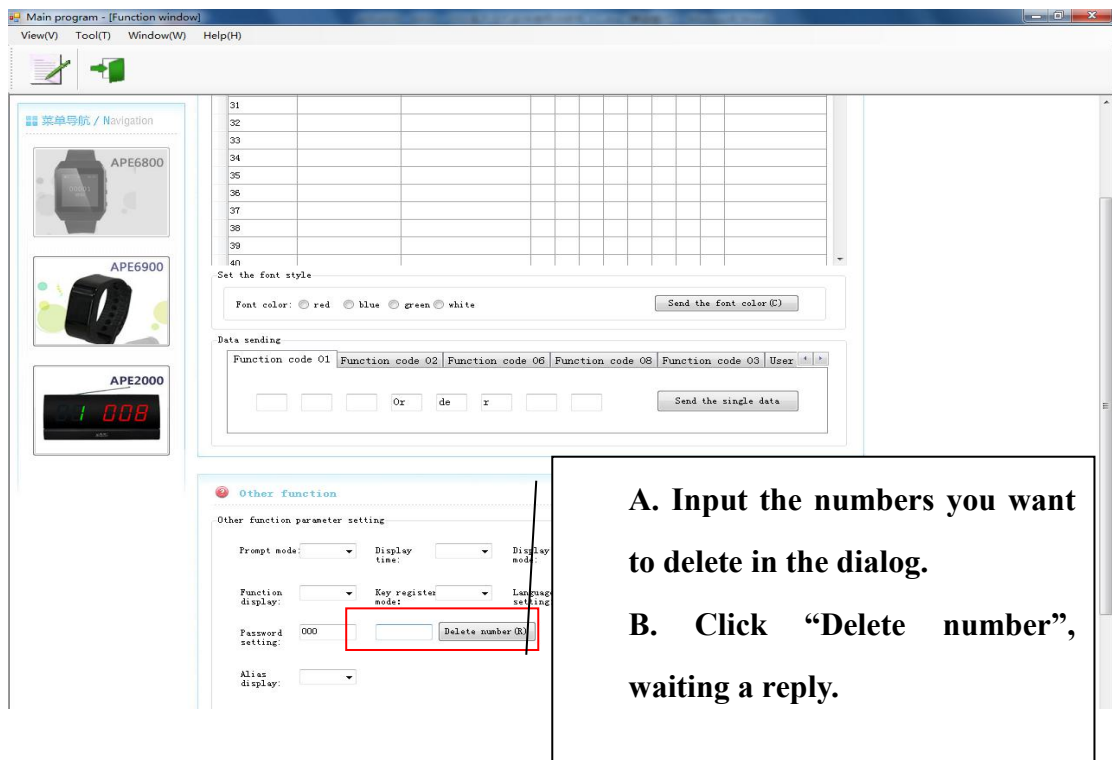
Click this row—click the right mouse button—choose to delete the row

13) Empty the row

Click any area of the form-- click the right mouse button—choose to empty the row

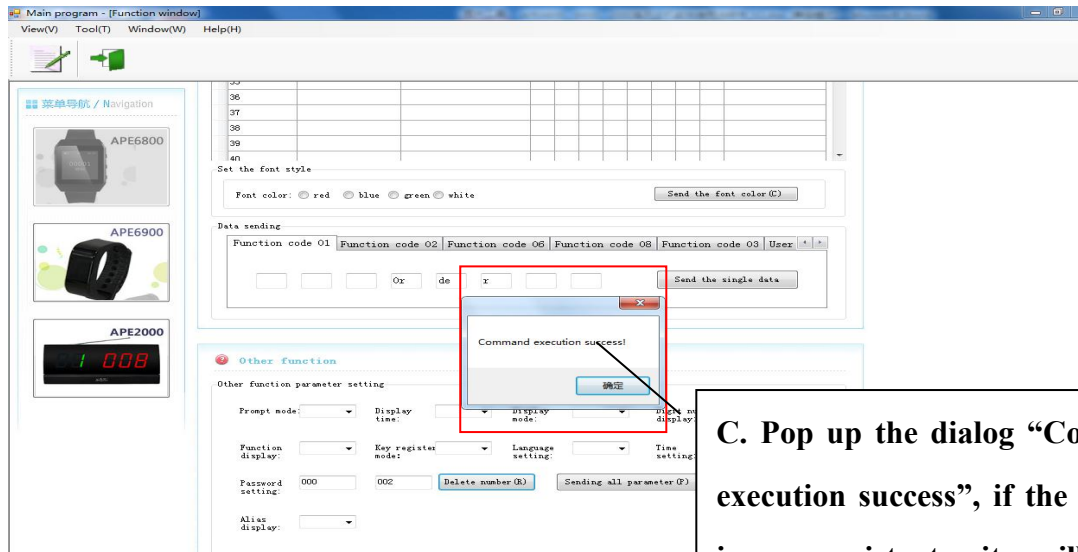
(All the function are easy, the using way is just same with EXCEL' s

iii. Delete the registered numbers (APE6800 needs to be set in “download mode) :



A. Input the numbers you want to delete in the dialog.

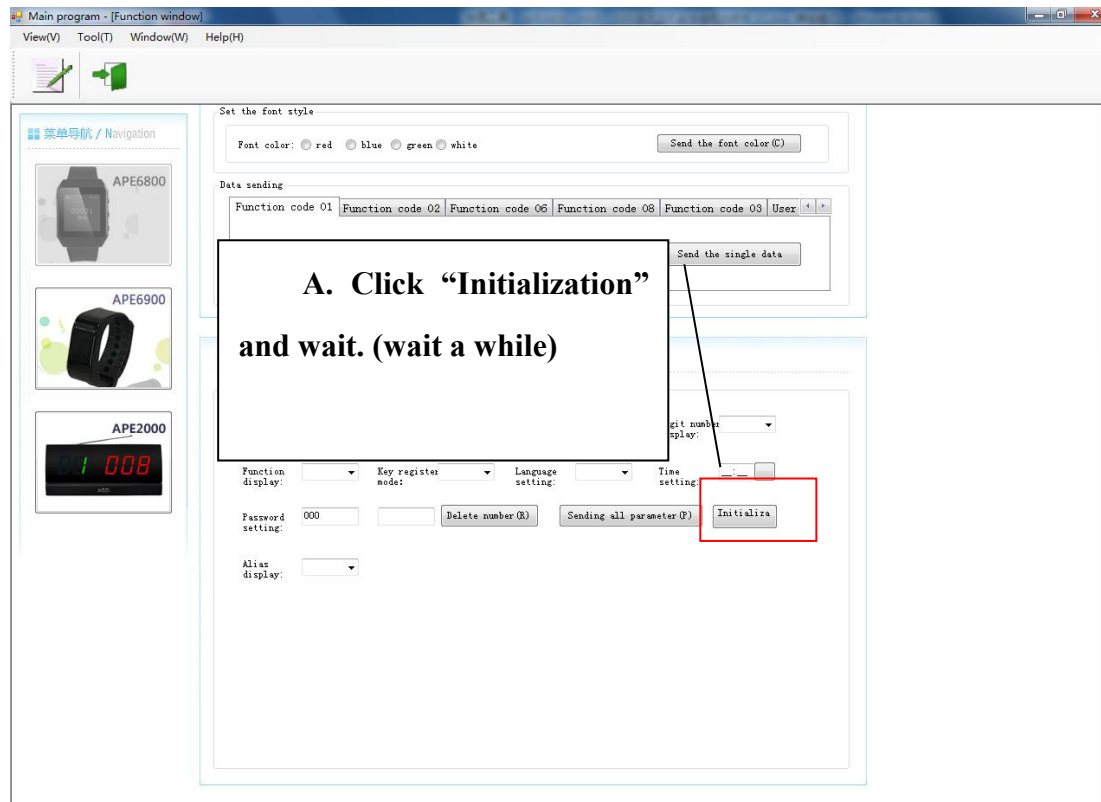
B. Click “Delete number”, waiting a reply.

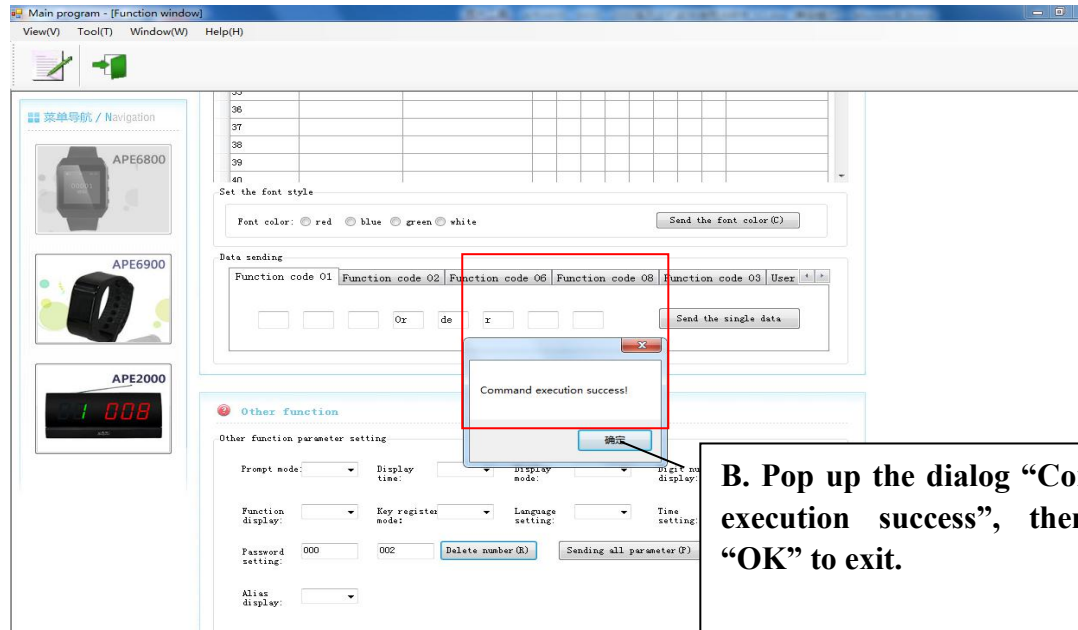


C. Pop up the dialog “Command execution success”, if the number is non-existent, it will show “Command execution failure”. Then click “OK” to exit.

iv. Initialization (APE6800 needs to be set in “download” mode):

Attention: Initialization only can delete all the registered number. It cannot delete the functional parameter, user-defined information and user-defined aliases of the buttons.





v. Alias download:

1. Please set APE6800 into “Download” mode, and keep pressing FUN key until “ok” appears on the screen.
2. Open the software, click the left mouse button to “Get the hardware ID”
3. On the form, click the right mouse button to “Read the whole data” until all data showing.
4. Please set APE6800 into “Alias Downloading” mode, and keep pressing FUN key until “ok” appears on the screen.

1) Send the alias

Click the left mouse button on the alias—click the right mouse button to choose “send the alias”—pop up the dialog “data sending success”—click “OK”, meaning the alias of the button is registered successfully on APE6800.

Notes: Please input the alias as picture

Data downloading			Alias downloading								
Serial number	Call button hardware ID	Register number	1	2	3	4	5	6	7	8	Joined column
0	E8C5DE	00004-01	SI	NG	CA	LL	SI	NG	CA	LL	SINGCALLSINGCALL
1	CEA791	00002-01	SI	NG	CA	LL					SINGCALL
2	686D98	00003-01		SI	NG	CA	LL				SINGCALL
3	DEA792	00005-01			SI	NG	CA	LL			SINGCALL
4	CEA794	00006-01				SI	NG	CA	LL		SINGCALL
5	CEA798	00007-01					SI	NG	CA	LL	SINGCALL

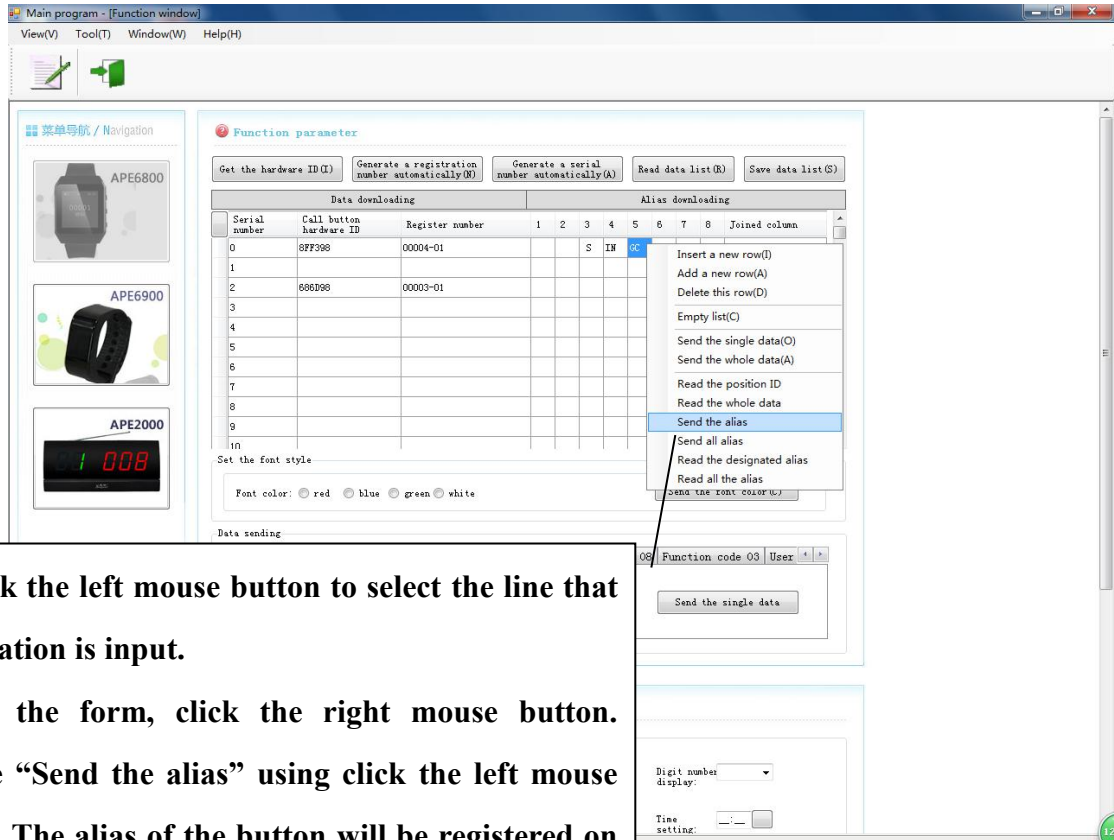
A. Please input the user-defined text into the “Joined column”. Then press “Enter” key on the keyboard or click the left mouse button on the other place of the form. The user-defined text will be automatically input on the dialog “1-8”.

Data downloading			Alias downloading								
Serial number	Call button hardware ID	Register number	1	2	3	4	5	6	7	8	Joined column
			SI	NG	CA	LL					
			SI	NG	CA	LL	SI	NG	CA	LL	

B. Please use the left mouse button to choose the text on the dialog “1-8”. Then press “Delete” key on the keyboard to delete these text.

Data downloading			Alias downloading								
Serial number	Call button hardware ID	Register number	1	2	3	4	5	6	7	8	Joined column
			SI	NG	CA	LL					

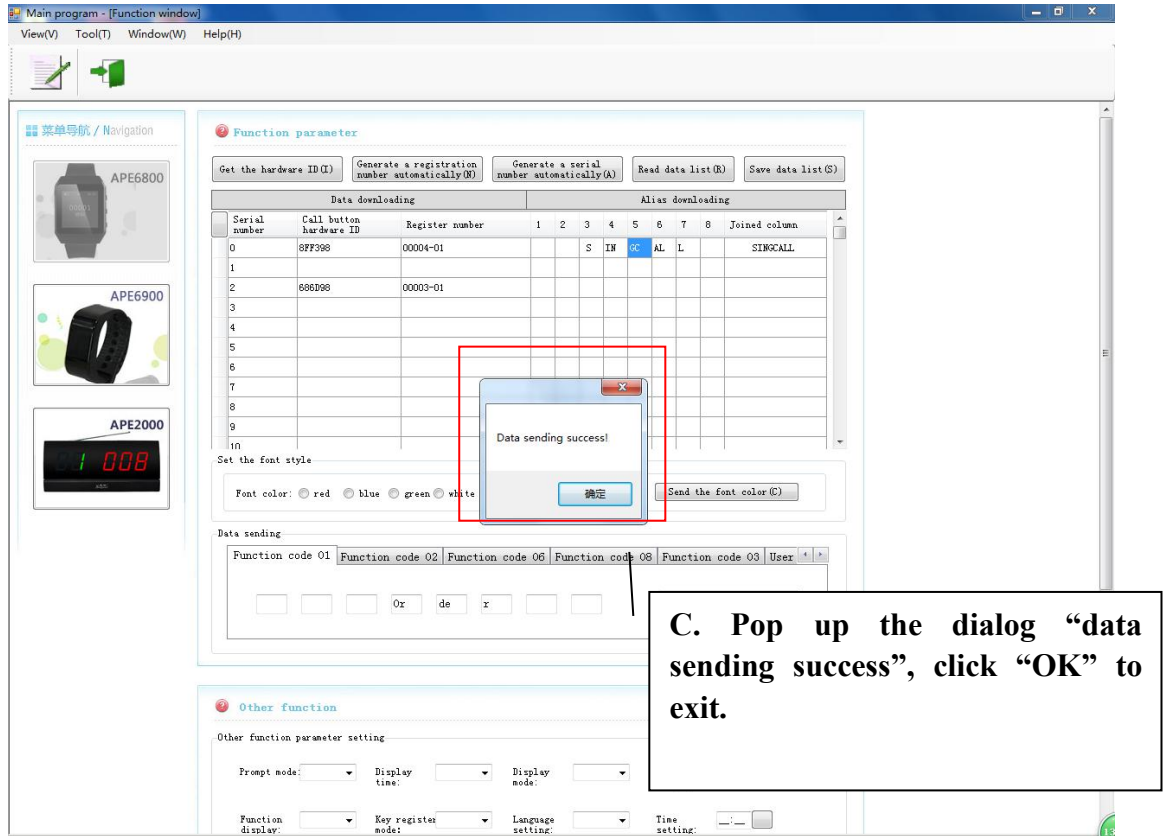
C. This dialog will become blank.



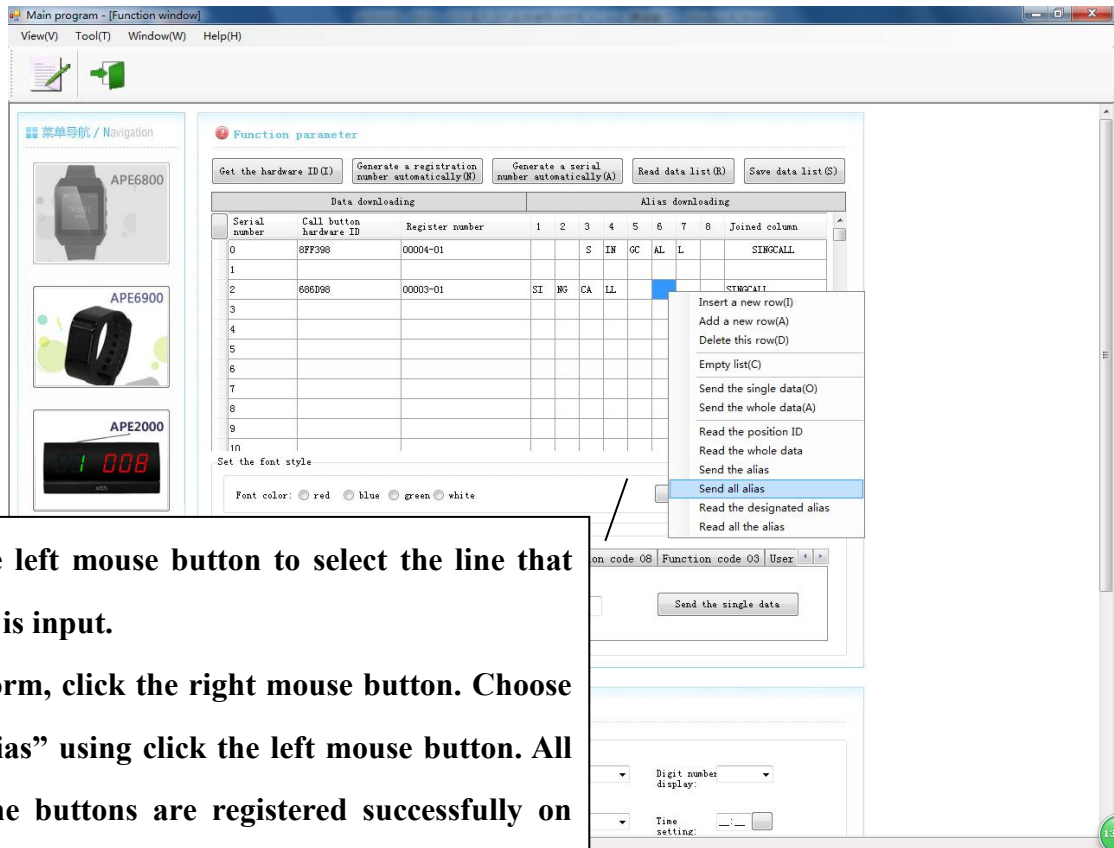
A. Click the left mouse button to select the line that information is input.

B. On the form, click the right mouse button.

Choose “Send the alias” using click the left mouse button. The alias of the button will be registered on APE6800.

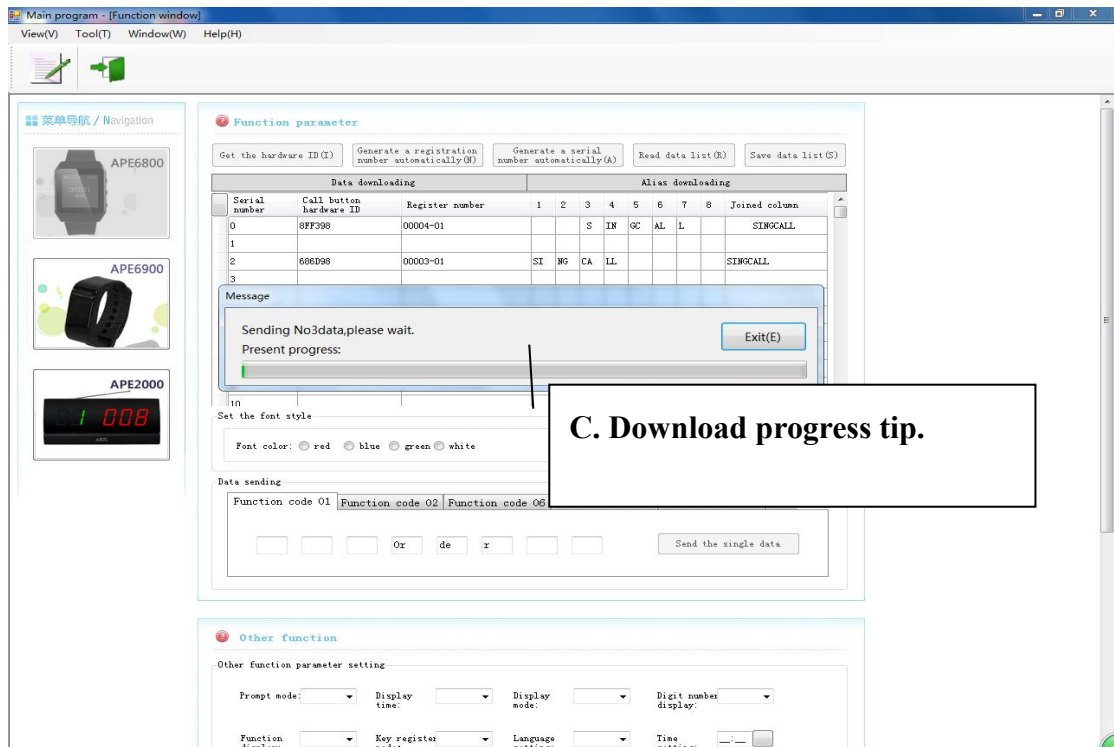


2) Send all aliases (please set APE6800 into “Alias Downloading” mode):
 Click the left mouse button to choose the alias—click the right mouse button to choose “send all alias”—pop up the dialog “data sending success”—click “OK”, meaning all aliases of the buttons are registered successfully on APE6800.

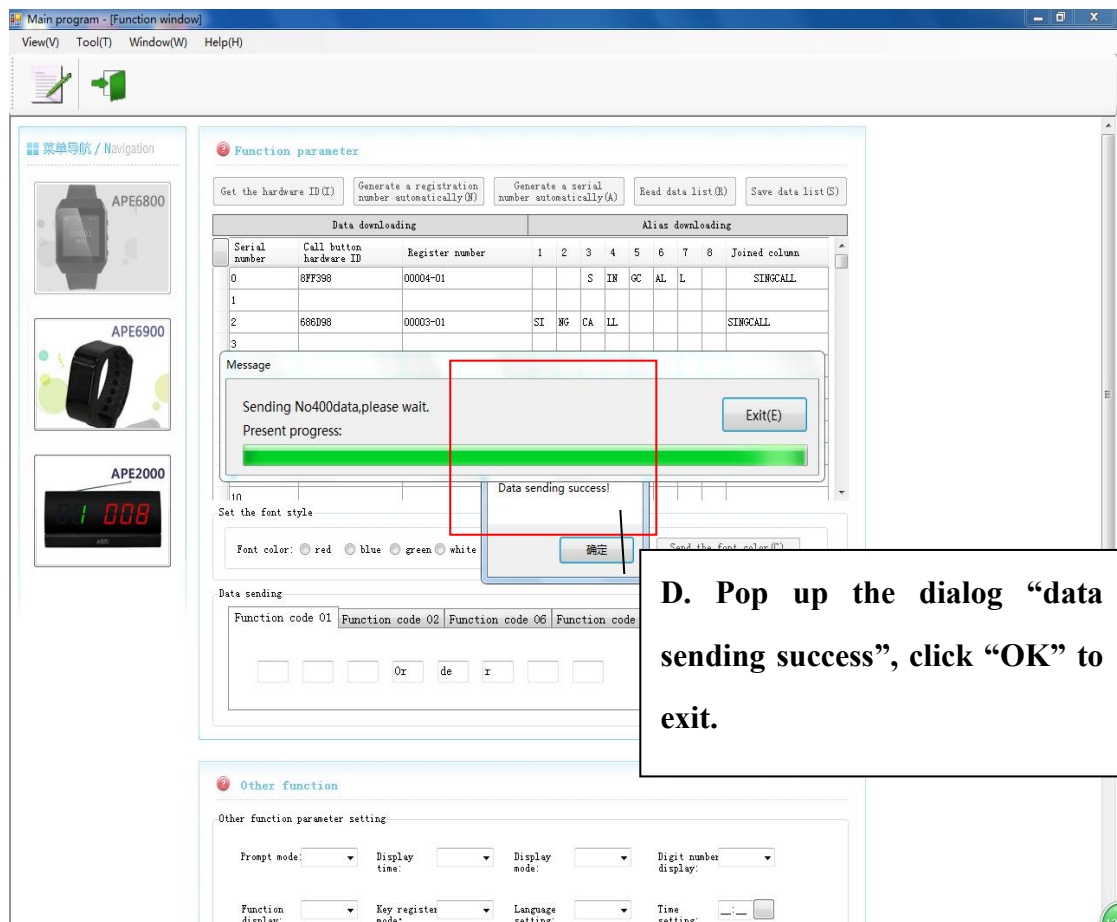


A. Click the left mouse button to select the line that information is input.

B. On the form, click the right mouse button. Choose "Send all alias" using click the left mouse button. All aliases of the buttons are registered successfully on APE6800.



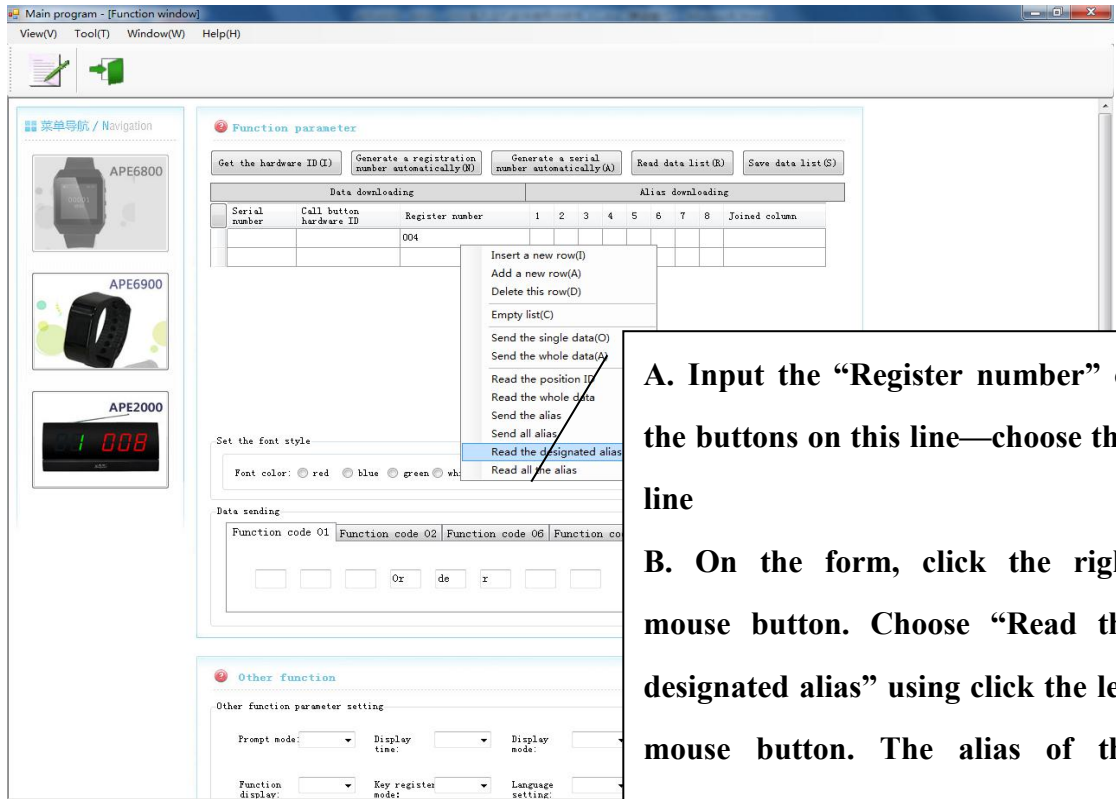
C. Download progress tip.



3) Read the designated alias

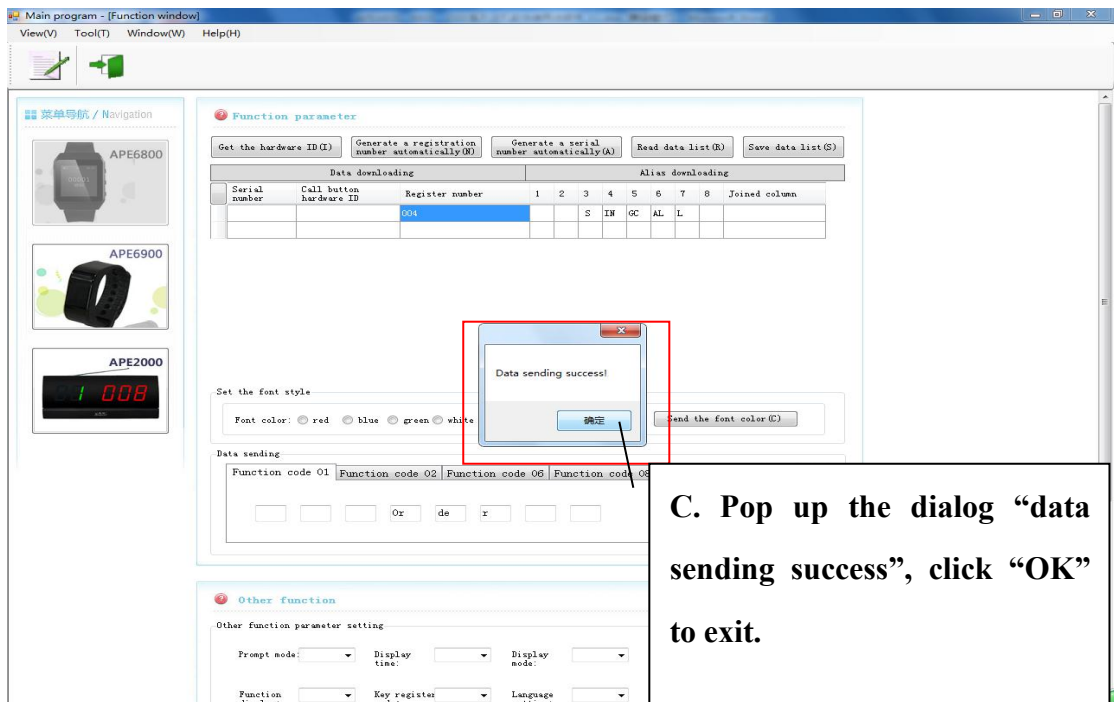
(Please set APE6800 into “Alias Downloading” mode):

Input the Registered number on the form—click the left mouse button to choose “Read the designated alias”—click the right mouse button to choose read the designated alias— pop up the dialog “data sending success”—click “OK”. It means reading successfully.



A. Input the “Register number” of the buttons on this line—choose this line

B. On the form, click the right mouse button. Choose “Read the designated alias” using click the left mouse button. The alias of the register number on APE6800 will be uploaded to the corresponding form.

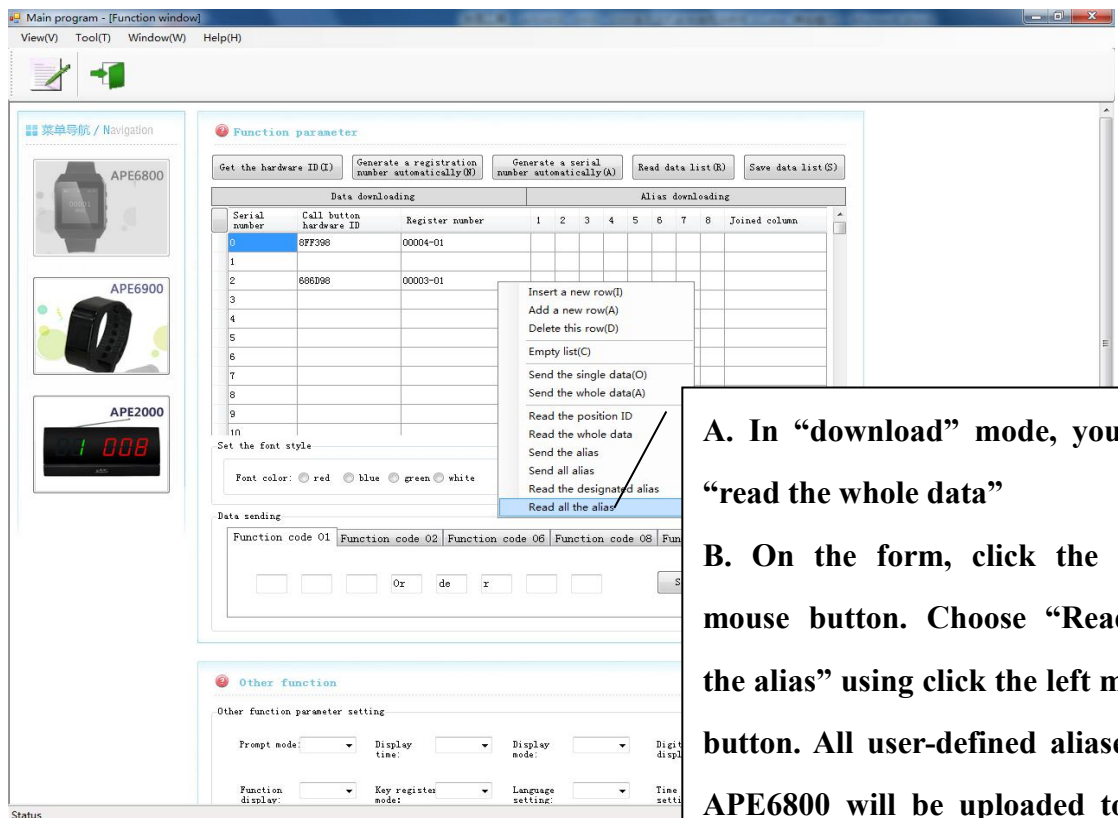


C. Pop up the dialog “data sending success”, click “OK” to exit.

4) Read all the alias

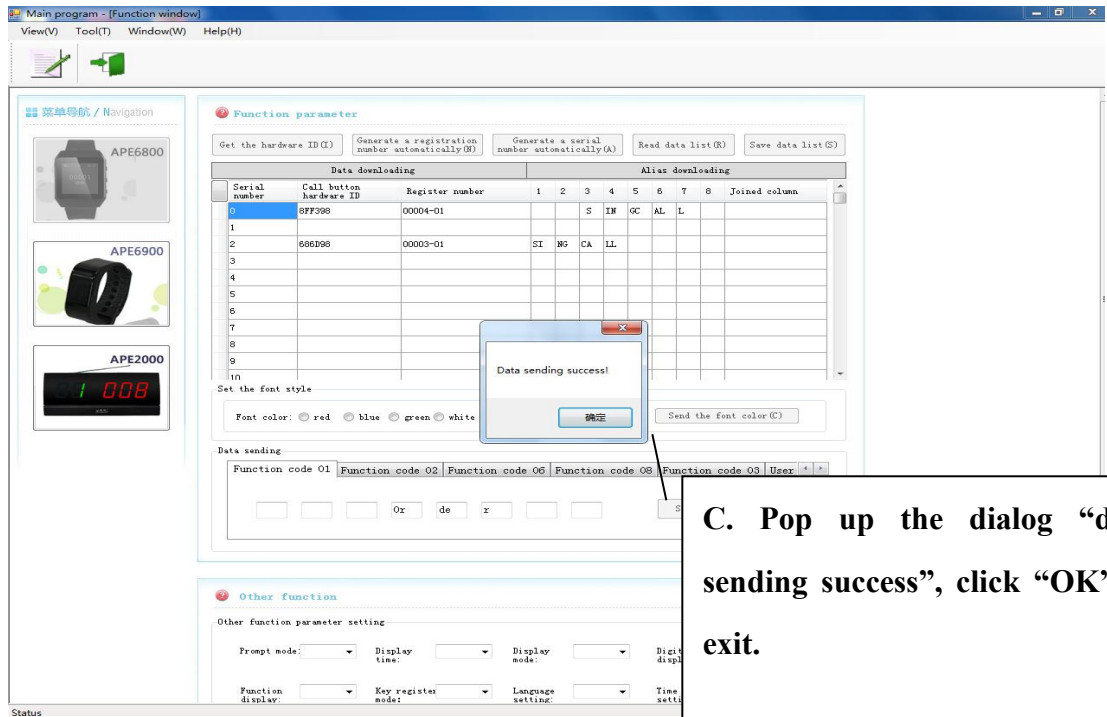
(Please set APE6800 into “Alias Downloading” mode):

In “download” mode, you can “read the whole data”—in “Alias Downloading” mode, click the left mouse button to “read all the alias”—click the right mouse button to choose read all the alias—pop up the dialog “data sending success”—click “OK”. It means reading successfully.



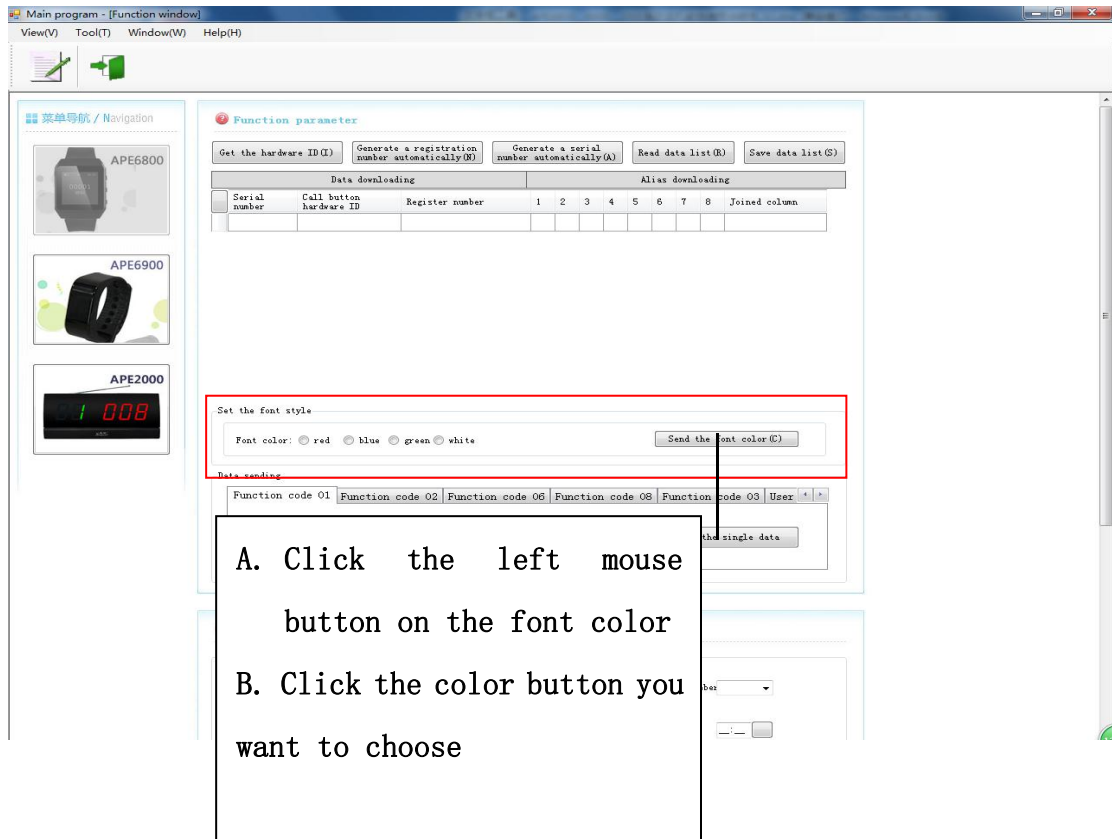
A. In “download” mode, you can “read the whole data”

B. On the form, click the right mouse button. Choose “Read all the alias” using click the left mouse button. All user-defined aliases on APE6800 will be uploaded to the corresponding form.



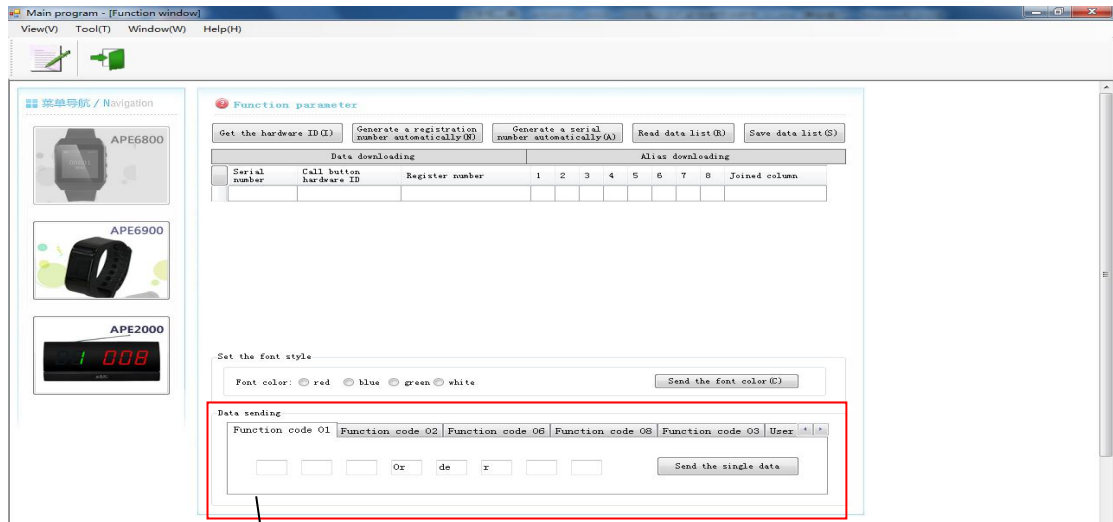
After finishing the set, please press [FUN] key to back. Then press [ENT] to choose “Alias display”. Press [FUN] until “Off” on the screen. Then press [ENT] to choose “On”. Press [FUN] key to back the standby mode.

vi. The screen font color setting (APE6800 needs to be set in “download” mode): choose the font color— “font color”



vii. Custom the function name of button and LOGO (Only apply to APE6800, APE6800 needs to be set in “download” mode)

Attention: The number key of single button is 5 at most, the corresponding display will show the digital code (1, 2, 6, 8, 3).



A. enter the Logo into the corresponding text boxes (one text boxes can enter one Chinese word, two English letters or two digits. One function is entered up to eight Chinese words, sixteen English letters or sixteen digits). Blank means not display.

B. Finishing the setting, please click the left mouse button on “single data sending”. Waiting for return after the prompt and do next step.

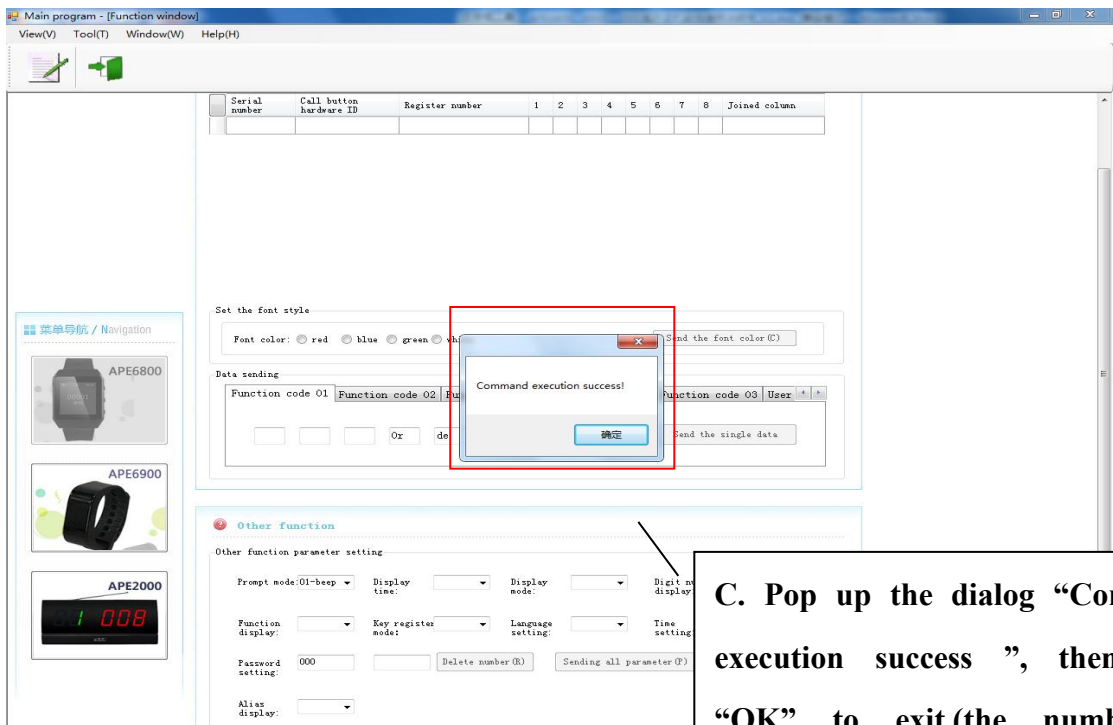
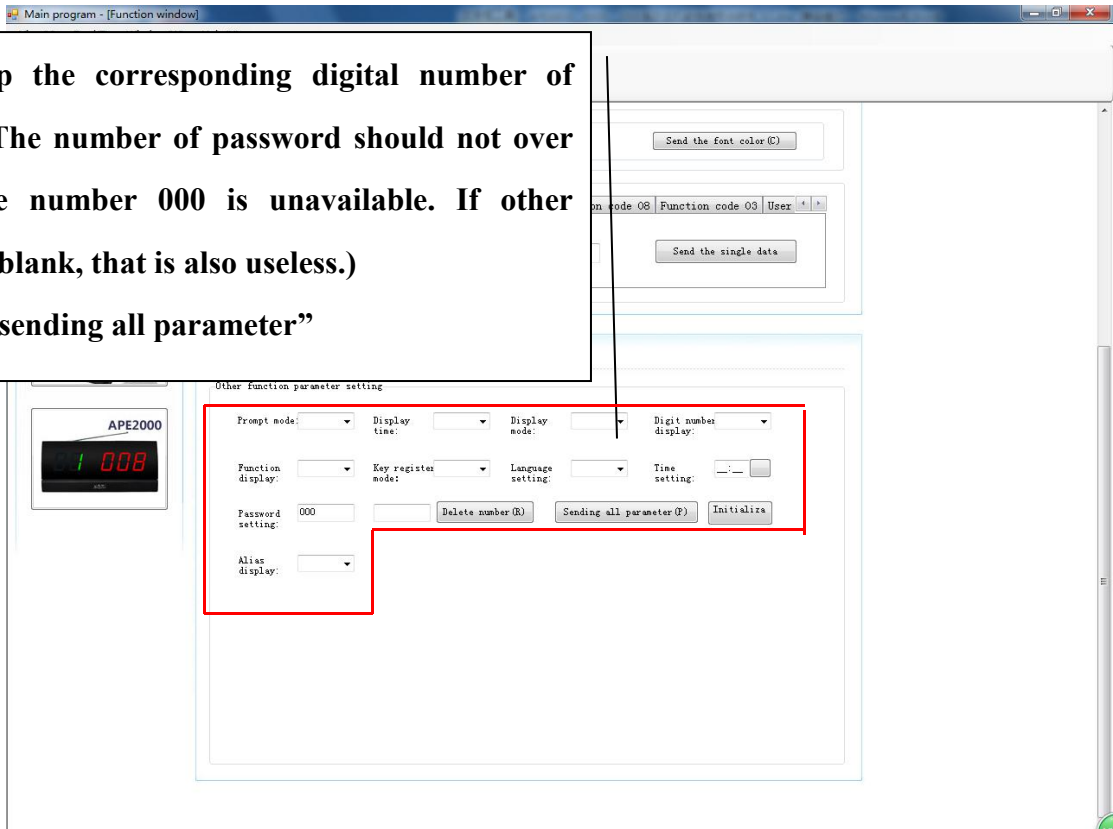
C. After finishing the set of APE6800, must use “ON/OFF” button to reboot the watch. That means the set is successful.

viii. Other function setting (APE6800 needs to be set in “download” mode)

Select parameter—“sending all parameter”—pop up the dialog “Command execution success”, then click “OK” to exit.(the number of parameter you change, the number of dialog will pop up)

A. Set up the corresponding digital number of parameter. (The number of password should not over 250, and the number 000 is unavailable. If other parameter is blank, that is also useless.)

B. Click “sending all parameter”



C. Pop up the dialog “Command execution success ”, then click “OK” to exit.(the number of parameter you set, the number of dialog will pop up)

Remarks:

1) Password setting

The password is 181, other numbers will encrypt the watch APE6800.

2) The prompting mode of other basic parameter

	00	01	02	03	04	05
Prompt mode	beep	beep&vibration	vibration1	vibration 2	vibration 3	vibration 4
Display mode	XXX	XXX-XX				
Digit number display	Three-digit	Four-digit	Five-digit			
Function display	off	on				
Key register mode	single-key	multi-key				